



Barry Lawrence Ruderman Antique Maps Inc.

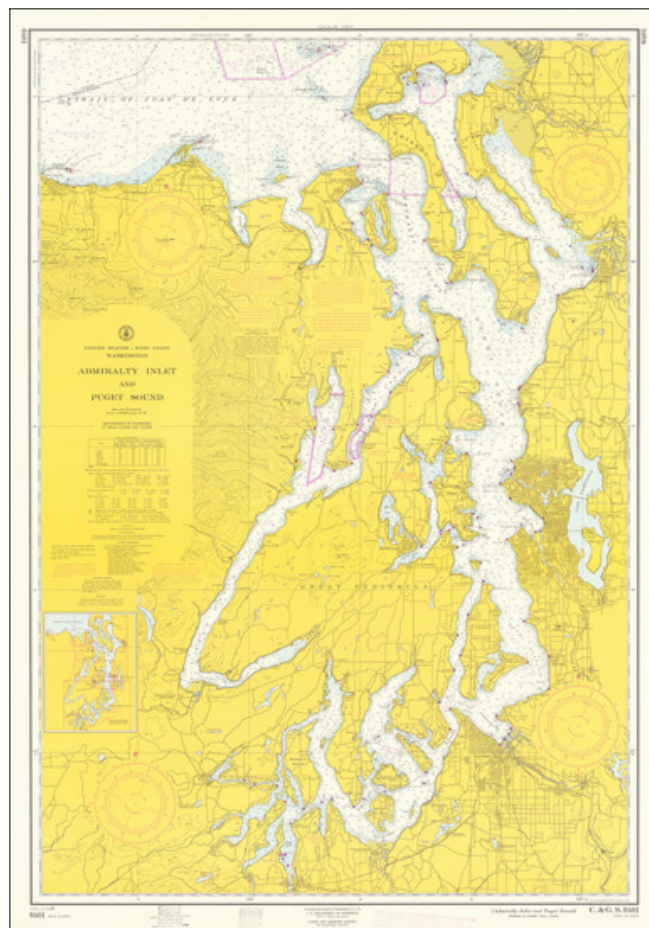
7407 La Jolla Boulevard
La Jolla, CA 92037

www.raremaps.com

(858) 551-8500
blr@raremaps.com

Seattle Harbor — Admiralty Inlet and Puget Sound

Stock#: 98813
Map Maker: U.S. Coast & Geodetic Survey
Date: 1965
Place: Washington, D.C.
Color: Color
Condition: VG+
Size: 27 x 39 inches
Price: \$ 145.00



Description:

Survey map of Admiralty Inlet and Puget Sound, showing land elevations and water depths. Landmarks useful for mariners such as towers and spires, including the Space Needle, completed in 1961, are shown.

AtoNs (Aids to Navigation), such as lighthouses, buoys, and beacons, are marked as purple dots and have their lighting abbreviation, timing, and sound (horn, bell, diaphone), when applicable.

Detailed Condition:

Minor wear at sheet edges. Publisher and reseller's ink stamps in the lower margin.