



# Barry Lawrence Ruderman Antique Maps Inc.

7407 La Jolla Boulevard  
La Jolla, CA 92037

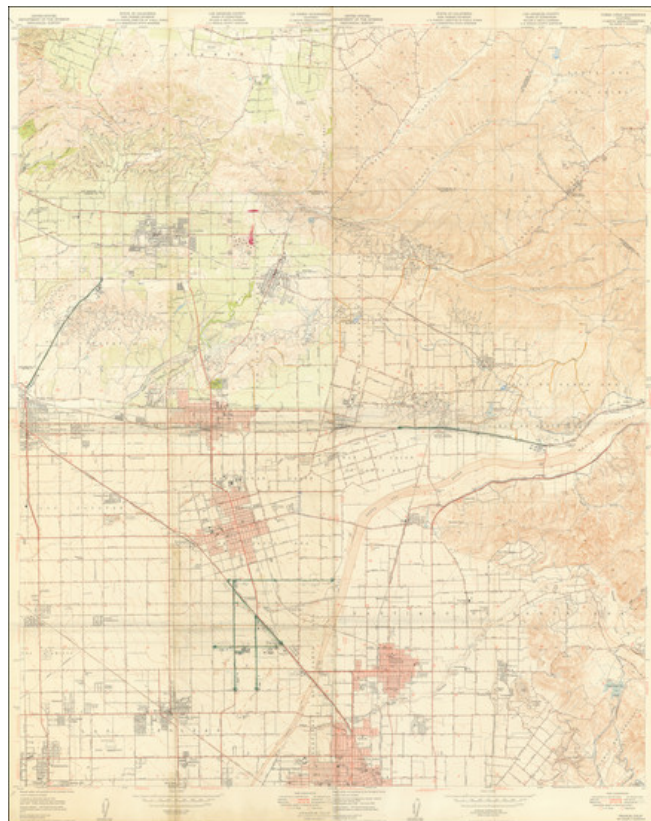
[www.raremaps.com](http://www.raremaps.com)

(858) 551-8500  
[blr@raremaps.com](mailto:blr@raremaps.com)

---

## (Anaheim) Orange, California

**Stock#:** 98731  
**Map Maker:** U.S. Department of the Interior  
Geological Survey  
**Date:** 1949  
**Place:** Washington D.C.  
**Color:** Color  
**Condition:** VG+  
**Size:** 37.6 x 44.5 inches  
**Price:** \$ 375.00



### Description:

#### *Planning Map For the Anaheim Area*

A detailed map that depicts the La Habra and Yorba Linda quadrangle of Los Angeles County, California. The map appears to be made for official use as evidenced by the robust amount of detail depicted, such as major roadways and different infrastructure locations.

Cities of the area are featured in the map such as Orange, Fullerton, and Buena Park. Public buildings and infrastructure of these cities like schools, parks, and hospitals are depicted on the map as well.

Some notable locations are shown on the map like the Pacific Electric Railroad, Whitter, and Hacienda Blvds. which connects Los Angeles and Orange Counties. The map describes the quality of road, indicates if they are paved, and illustrates the city connections between locations. Along these roads are interesting landmarks including an abandoned P.O.W. Camp and the Garden Grove Sanatorium.



**Barry Lawrence Ruderman  
Antique Maps Inc.**

7407 La Jolla Boulevard  
La Jolla, CA 92037

[www.raremaps.com](http://www.raremaps.com)

(858) 551-8500  
[blr@raremaps.com](mailto:blr@raremaps.com)

---

**(Anaheim) Orange, California**

**Detailed Condition:**

Handcolored outlines of major roads. Apparent red ink stain on center top. Very minor toning where folded.