



# Barry Lawrence Ruderman Antique Maps Inc.

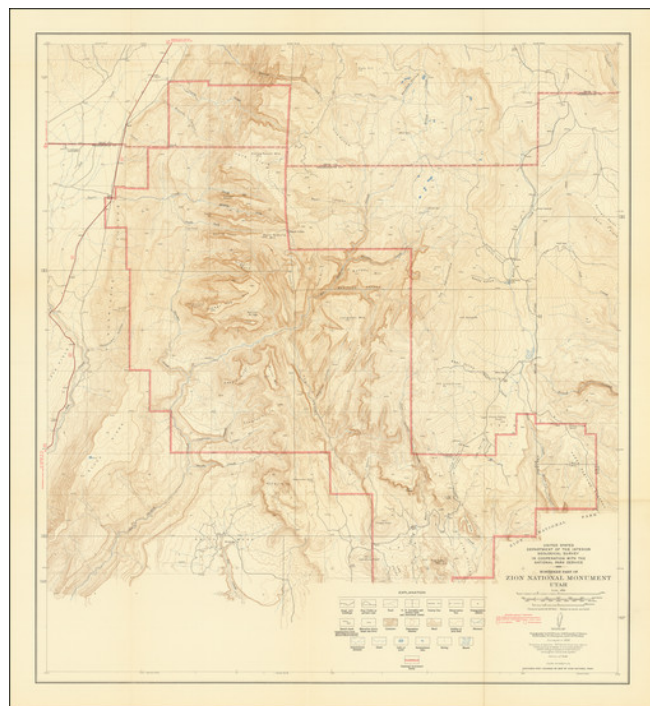
7407 La Jolla Boulevard  
La Jolla, CA 92037

[www.raremaps.com](http://www.raremaps.com)

(858) 551-8500  
[blr@raremaps.com](mailto:blr@raremaps.com)

## Northern Part of Zion National Monument Utah . . . Surveyed 1938

**Stock#:** 98454  
**Map Maker:** U.S. Geological Survey  
**Date:** 1946  
**Place:** Washington, D.C.  
**Color:** Color  
**Condition:** VG  
**Size:** 28.5 x 31.5 inches  
**Price:** \$ 145.00



### Description:

Detailed map of the northern region of Zion National Monument in Utah, reflecting the surveying work undertaken in 1938.

The map offers a topographical perspective of the area, capturing the region's geological formations and the existing roads and trails.

The red lines note the paved and unpaved routes through the region, as of 1945. The map shows public and private roads, buildings, trails, Native American Reservations, Triangulation Stations, elevations, lava fields, streams, seasonal streams, irrigation ditches, lakes, seasonal lakes, springs and marshes.

The 1930s were a significant time for the American National Park Service. With the introduction of New Deal programs, there was an increased focus on conservation efforts. Zion, known for its distinct landscape of cliffs, canyons, and diverse ecology, was an integral part of this conservation initiative. By the time this map was created in 1938, Zion had already been recognized as a national park for over ten years.

The map's design is thorough, with contour lines marking elevation changes and boundaries clearly



**Barry Lawrence Ruderman  
Antique Maps Inc.**

7407 La Jolla Boulevard  
La Jolla, CA 92037

[www.raremaps.com](http://www.raremaps.com)

(858) 551-8500  
[blr@raremaps.com](mailto:blr@raremaps.com)

---

**Northern Part of Zion National Monument Utah . . . Surveyed 1938**

outlined. The included legend clarifies the symbols representing various geographical features, such as trails, roads, springs, and streams.

Furthermore, the map offers insight into Zion's geological history. The patterns evident on the map hint at the processes of erosion, sedimentation, and volcanic activity that have occurred over thousands of years.

**Detailed Condition:**