



Barry Lawrence Ruderman Antique Maps Inc.

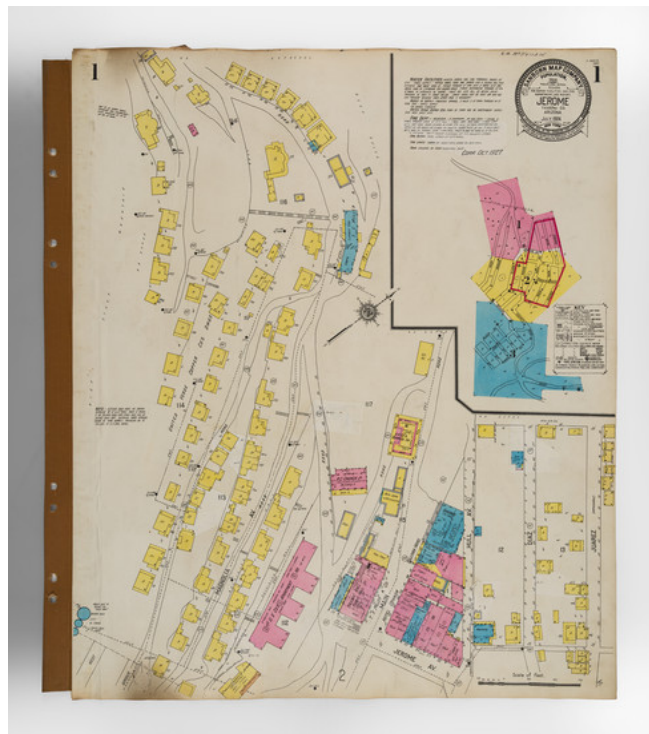
7407 La Jolla Boulevard
La Jolla, CA 92037

www.raremaps.com

(858) 551-8500
blr@raremaps.com

(Arizona Fire Insurance Atlas) Jerome Yavapai Co. Ariz.

Stock#: 97559
Map Maker: Sanborn Map Company
Date: 1924 (updated to October 1927)
Place: New York
Color: Hand Colored
Condition: See Description
Size: 21.5 x 25.5 inches
Price: SOLD



Description:

Jerome, Arizona in 1927: A Company Town

A fire insurance atlas of Jerome, Arizona, in the Black Hills of Yavapai County, produced by the Sanborn Map Company in July 1924 and updated in October 1927. This atlas offers a detailed record of the built environment of this copper mining town, dominated by the United Verde Copper Company. Comprising 3 unbound sheets with 5 hand-colored maps, the atlas was originally made as a specialized tool for insurance company underwriters in determining the degree of fire risk associated with any property shown therein. Today it is an unrivaled visual record of Jerome's urban landscape at that time.

Executed with a scale 50 feet to an inch, the atlas shows every building in Jerome with block-by-block, street-by-street, structure-by-structure, color-coded representations. Use of each structure is given: dwelling, grocery, storage, pool hall, lumber yard, movie theater, church, hardware, water tower, etc., often recording the name of the individual business owner. Color coding denotes building material.

In the 1920s, Jerome, Arizona, was a booming mining town situated in Yavapai County. Perched on the slopes of Cleopatra Hill, it was once known as the "Wickedest Town in the West" due to its raucous



Barry Lawrence Ruderman Antique Maps Inc.

7407 La Jolla Boulevard
La Jolla, CA 92037

www.raremaps.com

(858) 551-8500
blr@raremaps.com

(Arizona Fire Insurance Atlas) Jerome Yavapai Co. Ariz.

atmosphere filled with saloons, gambling halls, and a transient population. The town thrived primarily on copper mining, led by the United Verde Copper Company. The mine was among the most productive in the world at the time, supplying vast amounts of copper especially during World War I. In 1917 Jerome made headlines with labor unrest when Wobblies (members of the Industrial Workers of the World) were removed at gunpoint, loaded into a cattle car and shipped west. However, by the end of the 1920s, the once abundant ore began to deplete, signaling the beginning of Jerome's economic decline. Despite its challenges, the town was home to a diverse population, including a number of immigrants who came in search of employment opportunities in the mines. Today the town survives mainly due to tourism.

Here follows a selection of the structures and sites shown in the atlas:

- Bartlett Hotel Dwellings
- Grand Central Hotel
- Hotel Connor
- Hotel Jerome
- Jerome High School
- Little Daisy Hotel
- Sullivan Hotel
- United Verde Co. Hospital (both the older vacant structure and a current facility)
- United Verde Copper Co. mining operations (two full sheets)
- United Verde Copper Co. Dwellings

Rarity

The Jerome, Arizona Sanborn atlas is very rare in the market. Our edition, updated to 1927, may be a unique surviving exemplar of the 1924 iteration with such updates. OCLC locates a 1910 edition held by the University of Arizona. The Library of Congress has digitized editions of 1898, 1901, 1910, and 1917. As of this writing LC has not made their two editions of the 1924 atlas available online.

Detailed Condition:

Original hand-color. Unbound, with sheets mounted on alternating tabs. 5 maps (on 3 sheets). Final sheet is backed with linen. Complete. Extensive pasted updates to Oct. 1927. Small smoke stains to gutter corners of first page. Otherwise very clean and nice.