



Barry Lawrence Ruderman Antique Maps Inc.

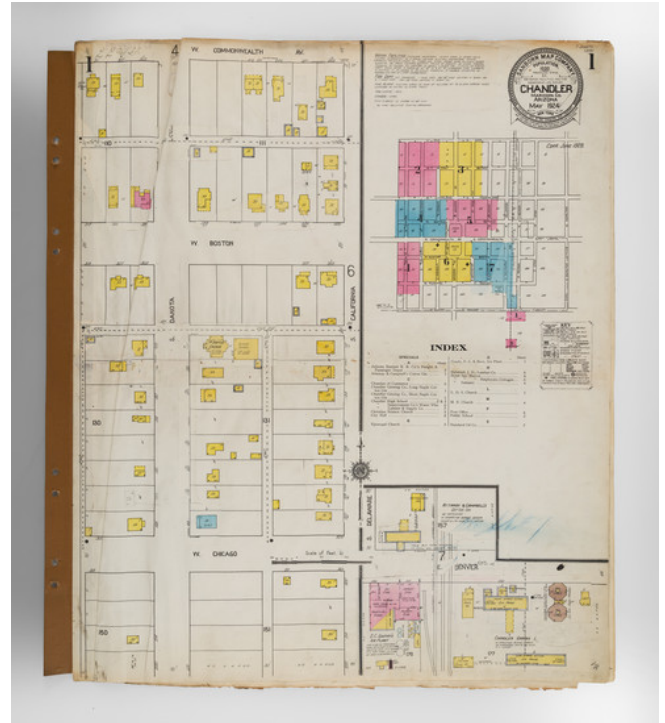
7407 La Jolla Boulevard
La Jolla, CA 92037

www.raremaps.com

(858) 551-8500
blr@raremaps.com

(Arizona Fire Insurance Atlas) Chandler Maricopa Co. Arizona

Stock#: 97557
Map Maker: Sanborn Map Company
Date: 1924 (updated to June 1929)
Place: New York
Color: Hand Colored
Condition: See Description
Size: 21.5 x 25.5 inches
Price: SOLD



Description:

Chandler, Arizona in 1929

A fire insurance atlas of *Chandler, Maricopa County, Arizona*, produced by the Sanborn Map Company in May 1924 and updated in June 1929. This atlas offers a detailed record of the built environment of the burgeoning Arizona town near Phoenix. Comprising 7 unbound sheets with hand-colored maps, the atlas was originally made as a specialized tool for insurance company underwriters in determining the degree of fire risk associated with any property shown therein. Today it is an unrivaled visual record of Chandler's urban landscape for the time.

Executed with a scale 50 feet to an inch, the atlas shows every building in Chandler with block-by-block, street-by-street, structure-by-structure color-coded representations. Use of each structure is given: dwelling, grocery, storage, lumber yard, movie theater, church, hardware, water tower, etc., often recording the name of the individual business owner. Color coding denotes building material. Interestingly, several of the buildings are noted as being of adobe construction.

In the 1920s, Chandler, Arizona, was a fledgling agricultural community primarily centered around cotton



Barry Lawrence Ruderman Antique Maps Inc.

7407 La Jolla Boulevard
La Jolla, CA 92037

www.raremaps.com

(858) 551-8500
blr@raremaps.com

(Arizona Fire Insurance Atlas) Chandler Maricopa Co. Arizona

farming. Founded in 1912 by Dr. A. J. Chandler, for whom the town was named, Chandler was designed as a planned community with modern irrigation techniques that enabled productive agriculture. The town was connected to broader markets through its access to key transportation routes, including the Southern Pacific Railroad. While it was still a small community at this time, the '20s set the foundation for Chandler's future growth, as it began attracting residents and local businesses, further solidifying its role as an emerging urban center in the region.

Notable structures shown include the Hotel San Marcos and the Hotel Suhuaro. The Suhuaro (or Suhwaro) was designed by a noted Arizona architectural firm Creighton & McDonald. Creighton designed many private residences, including the Peterson House in Tempe and Old Main on the Arizona State University campus.

Here follows a selection of the structures and sites shown in the atlas:

- American Legion Boxing Arena
- Attaway & Campbell's Cotton Gin
- Chandler Ginning Co. Long Staple Cotton
- Chandler Municipal Water Works
- "Cheap Mexican Shacks" (along S. Colorado, south of E. Boston)
- Hotel San Marcos
- Hotel San Marcos Bungalows (arranged around a pond)
- Hotel Suhuaro (incorporating a public library and the Chamber of Commerce)
- L. D. S. Church
- S. A. Gerrard Co. Fruits & Vegetables
- San Marcos Employees Cottages

Rarity

The Chandler Sanborn atlas is very rare in the market. Our 1924 (updated to June 1929) edition is almost certainly the unique surviving exemplar of the 1929 update.

OCLC lists only a single example of an unidentified edition of the Chandler Sanborn atlas, that at the University of Arizona. We also note California State Northridge's holdings of the 1915 and a 1924 base edition.

The Library of Congress has digitized their May 1915 edition, but as of this writing they have not made their base 1924 and 1924 (updated to 1932) editions available online.



**Barry Lawrence Ruderman
Antique Maps Inc.**

7407 La Jolla Boulevard
La Jolla, CA 92037

www.raremaps.com

(858) 551-8500
blr@raremaps.com

(Arizona Fire Insurance Atlas) Chandler Maricopa Co. Arizona

Detailed Condition:

Original hand-color. Unbound, with sheets mounted on alternating tabs. 7 sheets, with index on first page. Complete. Extensive pasted updates to June 1929. Some marginal toning of leaves. Small paper loss to paste-over in lower right corner of first map sheet (slightly affecting Chandler Ginning Co. image). Couple small closed tears (no paper loss). Minor darkening along edges of sheets. Else quite clean and nice.