



Barry Lawrence Ruderman Antique Maps Inc.

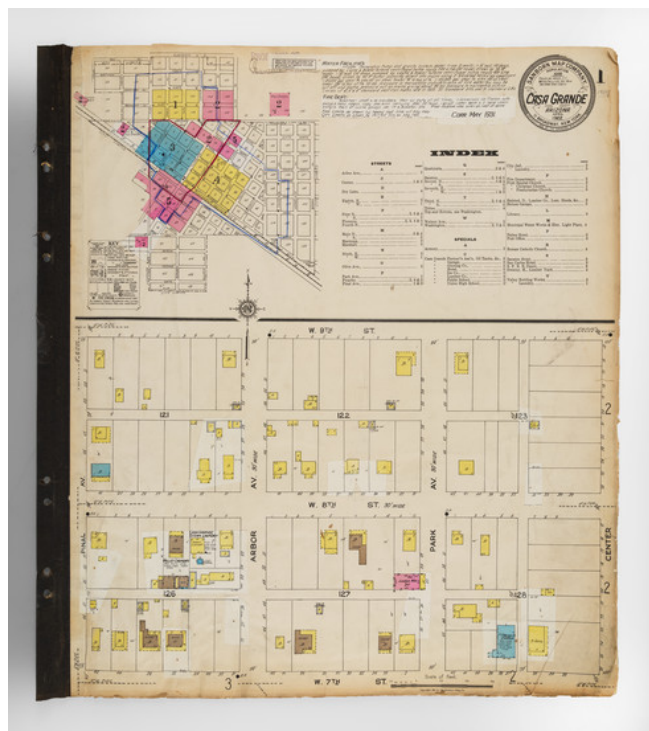
7407 La Jolla Boulevard
La Jolla, CA 92037

www.raremaps.com

(858) 551-8500
blr@raremaps.com

(Arizona Fire Insurance Atlas) Casa Grande, Pinal County Arizona

Stock#: 97554
Map Maker: Sanborn Map Company
Date: 1922 (updated to May 1931)
Place: New York
Color: Hand Colored
Condition: Good
Size: 21.5 x 25.5 inches
Price: SOLD



Description:

Casa Grande, Arizona in 1931

A fire insurance atlas of *Casa Grande, Pinal County, Arizona*, produced by the Sanborn Map Company in April 1922 and updated in May 1931. This atlas offers a detailed record of the built environment of this small Arizona town, located just south of the Gila River Indian Reservation, between Phoenix and Tucson. Comprising 5 unbound sheets with hand-colored maps, the atlas was originally made as a specialized tool for insurance company underwriters in determining the degree of fire risk associated with any property shown therein. Today it is an unrivaled visual record of Casa Grande's urban landscape for the time.

Executed with a scale 50 feet to an inch, every building in Casa Grande is accurately shown with block-by-block, street-by-street, structure-by-structure representations. Use of each structure is given: dwelling, grocery, storage, lumber yard, movie theater, church, hardware, water tower, etc., often recording the name of the individual business owner. Color coding denotes building material. Interestingly, several of the buildings are noted as being of adobe construction.



Barry Lawrence Ruderman Antique Maps Inc.

7407 La Jolla Boulevard
La Jolla, CA 92037

www.raremaps.com

(858) 551-8500
blr@raremaps.com

(Arizona Fire Insurance Atlas) Casa Grande, Pinal County Arizona

During the 1920s, Casa Grande was primarily an agricultural community, with cotton farming as one of its major economic activities. The Southern Pacific Railroad, which passed through the town, played a significant role in transporting agricultural goods, thereby linking Casa Grande to broader markets. The period also saw the establishment of some local businesses (attested by the numerous pasted-on updates in the present Sanborn atlas), and the town served as a regional hub for commerce and social activities. During WWII, a Japanese-American relocation camp was set up outside of Casa Grande, the Gila River War Relocation Center. Despite experiencing modest growth through the years with the introduction of new businesses, Casa Grande's economic backbone remained the agricultural sector.

Here follows a selection of the structures and sites shown in the atlas:

- Arizona State Armory
- Casa Grande Dispatch Job Printing
- Casa Grande Farmer's Association
- Casa Grande Union High School
- D. Halsted Lumber Co.
- H. Swanzy Lumber Yard
- O'Malley Lumber
- Pinal Creamery Co.
- Sacaton Hotel
- San Carlos Hotel
- Southern Pacific Railroad Depot
- Valley Bottling Works

Rarity

The Casa Grande Sanborn atlas is rare. Our example is almost certainly the unique survivor of the 1922 edition with May 1931 updates.

OCLC locates a single unidentified edition of the Casa Grande atlas, that at the University of Arizona. California State University Northridge lists holding a 1922 base edition. The Library of Congress has digitized their holdings of 1890, 1898, 1909, 1914, 1922, and a 1922 edition updated to 1940 (but not the May 1931 update).

Detailed Condition:

Original hand-color. Unbound, with sheets mounted on alternating tabs. 5 sheets, with index on first page. Complete. Extensive pasted updates to May 1931. Some marginal toning of leaves. Edge chipping and few



**Barry Lawrence Ruderman
Antique Maps Inc.**

7407 La Jolla Boulevard
La Jolla, CA 92037

www.raremaps.com

(858) 551-8500
blr@raremaps.com

(Arizona Fire Insurance Atlas) Casa Grande, Pinal County Arizona

small edge tears. Else generally clean and nice.