



# Barry Lawrence Ruderman Antique Maps Inc.

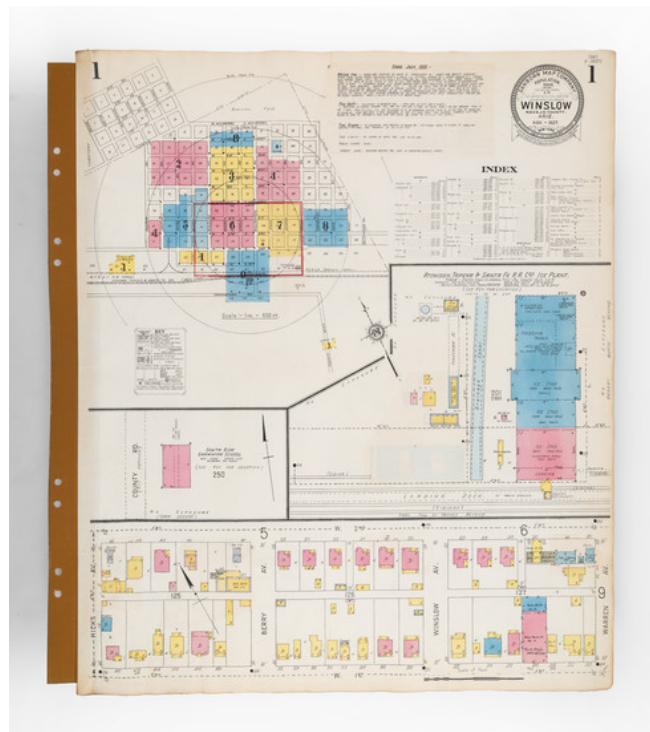
7407 La Jolla Boulevard  
La Jolla, CA 92037

[www.raremaps.com](http://www.raremaps.com)

(858) 551-8500  
[blr@raremaps.com](mailto:blr@raremaps.com)

## (Arizona Fire Insurance Atlas) Winslow Navajo County Ariz.

**Stock#:** 97306  
**Map Maker:** Sanborn Map Company  
**Date:** 1927 (updated to July 1931)  
**Place:** New York  
**Color:** Hand Colored  
**Condition:** See Description  
**Size:** 21.5 x 25.5 inches  
**Price:** SOLD



### Description:

#### *Illustrating All of the Street Corners in Winslow, Arizona.*

*Winslow Navajo County Ariz*, produced by the Sanborn Map Company in 1927, provides a detailed representation of the city, with particular emphasis on its fire prevention systems, water facilities, and prevailing architectural structures. Updated in July 1931, this nine-sheet fire insurance atlas offers a systematic account of the township's infrastructure, focusing especially on its water supply sourced from Clear Creek and the functionalities of its volunteer fire department.

In the 1920s, Winslow stood as a significant hub in the American Southwest. With the Santa Fe Railroad establishing the town as a major stopover point, Winslow quickly became a bustling center of trade, transportation, and opportunity. Its strategic location meant that goods, cultures, and ideas frequently passed through, adding layers to its multicultural tapestry. As with many towns during the Roaring Twenties, Winslow saw economic prosperity, cultural shifts, and architectural growth. The 1920s also brought the rise of automobile travel, with Route 66 cutting a path close by, further cementing Winslow's position as a crucial nexus between the eastern and western United States.



**Barry Lawrence Ruderman  
Antique Maps Inc.**

7407 La Jolla Boulevard  
La Jolla, CA 92037

[www.raremaps.com](http://www.raremaps.com)

(858) 551-8500  
[blr@raremaps.com](mailto:blr@raremaps.com)

---

**(Arizona Fire Insurance Atlas) Winslow Navajo County Ariz.**

The atlas employs a range of symbols to represent distinct building materials—brick, stone, and wood among others—and offers specifics on architectural elements, such as the heights of fire walls and the positions of steam boilers.

Of notable mention is the atlas's extensive detailing of Winslow's water facilities, managed by the Santa Fe Improvement Co. The town's water infrastructure incorporates various elements, from electric turbine pumps manufactured by Byron Jackson & Johnson to a large reservoir system. This water infrastructure is intertwined with the resources of the volunteer fire department, which is equipped with an assortment of apparatuses including the American La France Pumper.

An inset of the front page focuses on the operations of the Atchison, Topeka & Santa Fe Railroad Company's ice plant, revealing its operational capabilities, the employment of a diesel engine, and its daily ice production capacity.

**Rarity**

The Winslow, Arizona Sanborn Atlas is very rare in the market. Not a single example of any edition is located in OCLC, though California State Northridge lists a 1927 edition in the index to their large Sanborn Atlas collection and the Library of Congress has digitized a 1927 edition, but the latter does not incorporate the numerous corrections through July 1931 included on our example.

**Detailed Condition:**

Original hand-color. Unbound, with sheets mounted on alternating tabs. 9 maps, including the index page. Complete. Pastedown updates to July 1931.