



Barry Lawrence Ruderman Antique Maps Inc.

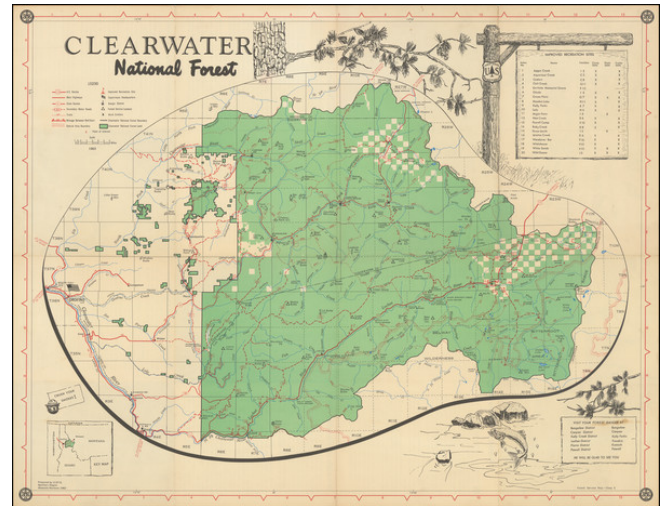
7407 La Jolla Boulevard
La Jolla, CA 92037

www.raremaps.com

(858) 551-8500
blr@raremaps.com

Clearwater National Forest

Stock#: 97009
Map Maker: United States Forest Service
Date: 1962
Place: Missoula, Montana
Color: Color
Condition: VG
Size: 27.25 x 21.25 inches
Price: \$ 175.00



Description:

Detailed map of the Clearwater National Forest, published by the US Forest Service, including an image of Smokey The Bear.

Clearwater National Forest's origins date back to the early 20th century, a period characterized by growing awareness of the importance of conservation in the United States. This forest became a part of the nation's broader effort to protect and preserve its natural heritage.

The 1962 map, published by the US Forest Service, offered a detailed representation of the Clearwater National Forest. A standout feature of this map was the inclusion of Smokey The Bear, an iconic symbol of forest fire prevention. It methodically charted out various routes, such as the US highway routes, main highways, state routes, and secondary motor roads. This precision made it an invaluable tool for visitors and conservationists alike.

In addition to roads and highways, the map highlighted the diverse amenities and landmarks within the forest. It pinpointed the supervisor's headquarters, ranger station, forest service lookouts, and work centers. Furthermore, the map was color-coded, with national forest lands distinctly marked in green.

One of the key utilities of the map was its index of 20 recreational sites, giving visitors a range of options to explore, and pointing them to some of the most popular destinations in the early 1960s.

Accompanying the map was a National Forest informational brochure. This added depth to the visitor's experience, providing context and historical background. Moreover, the black and white photos on the



**Barry Lawrence Ruderman
Antique Maps Inc.**

7407 La Jolla Boulevard
La Jolla, CA 92037

www.raremaps.com

(858) 551-8500
blr@raremaps.com

Clearwater National Forest

reverse side gave a snapshot of the forest's natural beauty.

Clearwater National Forest was officially established in 1908, an outcome of President Theodore Roosevelt's commitment to conservation. Roosevelt, a staunch advocate for the preservation of America's wild spaces, saw the establishment of national forests as paramount to the nation's future environmental health. The vast expanse of land that became Clearwater was specifically chosen for its diverse ecosystem, pristine beauty, and the need to protect it from logging and other commercial activities.

The creation of Clearwater National Forest not only ensured the preservation of its woodlands, rivers, and wildlife but also reflected the nation's evolving consciousness towards environmental stewardship. Over the years, this dedication to conservation has only strengthened, making Clearwater a testament to America's enduring commitment to protecting its natural treasures.

Detailed Condition: