



# Barry Lawrence Ruderman Antique Maps Inc.

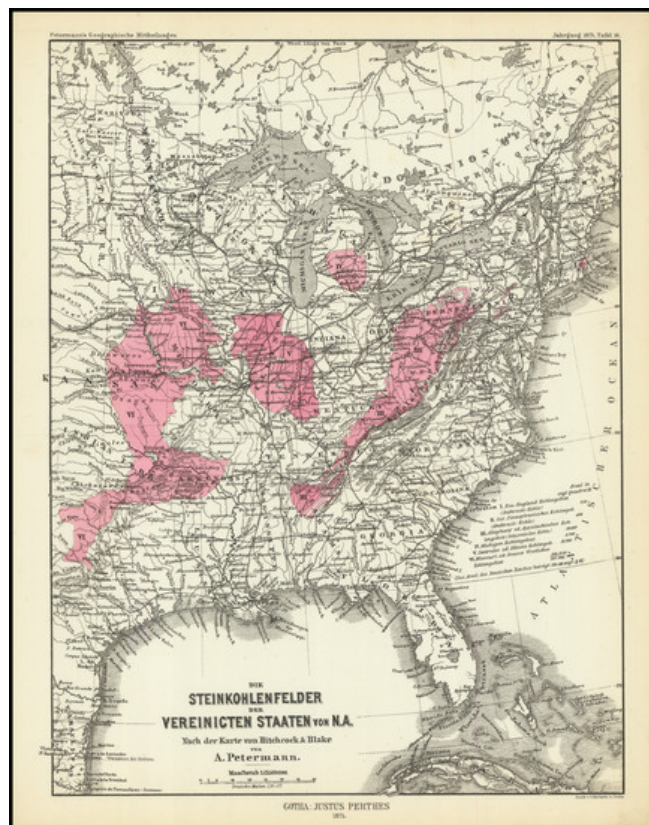
7407 La Jolla Boulevard  
La Jolla, CA 92037

[www.raremaps.com](http://www.raremaps.com)

(858) 551-8500  
[blr@raremaps.com](mailto:blr@raremaps.com)

## (Coal Fields) Die Steinkohlenfelder der Vereinigten Staaten von N.A.

**Stock#:** 96991  
**Map Maker:** Petermann / Perthes  
**Date:** 1875  
**Place:** Gotha  
**Color:** Hand Colored  
**Condition:** VG+  
**Size:** 7.5 x 10 inches  
**Price:** \$ 245.00



### Description:

*Die Steinkohlenfelder der Vereinigten Staaten von N.A.*, by Augustus Petermann after a map by Hitchcock & Blake and published by Justus Perthes in Gotha in 1875, offers a detailed portrayal of the coal fields in the United States of North America. Focused regions of importance are denoted with a pink hue, signifying their prominent role in coal extraction and distribution.

The late 19th century marked a pivotal period in the industrial development of the United States, with coal mining playing a crucial role in both economic growth and technological advancement. The discovery and utilization of vast coal deposits powered the nation's factories, locomotives, and ships, underscoring the United States' burgeoning status as an industrial powerhouse.

The map, with its intricate delineation, enumerates several significant coal regions, emphasizing their respective areas in English square miles. Notably, the New England and East Pennsylvania regions, both rich in anthracite coal, span 750 and 494 square miles, respectively. In stark contrast, the vast Alleghany



**Barry Lawrence Ruderman  
Antique Maps Inc.**

7407 La Jolla Boulevard  
La Jolla, CA 92037

[www.raremaps.com](http://www.raremaps.com)

(858) 551-8500  
[blr@raremaps.com](mailto:blr@raremaps.com)

---

**(Coal Fields) Die Steinkohlenfelder der Vereinigten Staaten von N.A.**

or Appalachian coal field, abundant in bituminous coal, stretches over an impressive 59,440 square miles. The map also sheds light on other key regions such as the Michigan coal field, the Central or Illinois coal region, and the expansive Missouri or Great Western coal region, the latter covering a staggering 108,000 square miles.

Interestingly, the map draws a comparison to the area of the German Empire, calculated to be 210,444 English square miles. This juxtaposition, likely intended for a German-speaking audience, contextualizes the immense size and significance of the American coal regions, further underscoring the pivotal role of coal in shaping the nation's industrial trajectory. The map, therefore, stands as both a cartographic marvel and a historical document, capturing a pivotal moment in the industrial narrative of the United States.

**Detailed Condition:**

Original pink hand-coloring.