



Barry Lawrence Ruderman Antique Maps Inc.

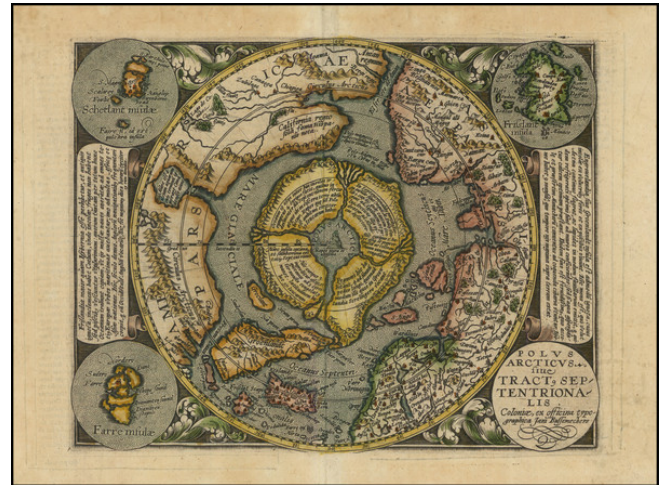
7407 La Jolla Boulevard
La Jolla, CA 92037

www.raremaps.com

(858) 551-8500
blr@raremaps.com

Polus Arcticus sive Tract. Septentrionalis. Coloniae, ex Officina Typographica Jani Bussemechers (Shows Mythical Island of Frisland)

Stock#: 96591
Map Maker: Quad
Date: 1600
Place: Cologne
Color: Hand Colored
Condition: VG+
Size: 11 x 8.5 inches
Price: SOLD



Description:

One of the Earliest Obtainable Maps of the North Polar Regions -- Large Inset of Mythical Island of Frisland

Polus Arcticus sive Tract. Septentrionalis. Coloniae, ex Officina Typographica Jani Bussemechers by Matthias Quad, produced in Cologne in 1600, offers a fascinating cartographic depiction of the North Polar regions, including a notable inset detailing the mythical island of Frisland. An interpretation of Mercator's 1595 map, it presents the Arctic through a blend of early scientific understanding, navigational records, and prevalent myths of the age.

During the late 16th and early 17th centuries, Europe's interest in the Arctic regions grew immensely. Expeditions sought northern passages to Asia, and cartographers endeavored to compile the discoveries of such voyages into comprehensive maps. Quad's work embodies this period of exploration and curiosity. Notably, it shows the North Pole as a grand rock within a whirlpool, encircled by islands. The allusion to California, depicted north of the 'El streto de Anian,' demonstrates the incomplete and occasionally misguided understanding Europeans had of the New World's geography.

The decorative flourishes, such as the floral framework and the four corner roundels, enhance the map's aesthetic. The roundels present the title, depictions of the Faeroe and Shetland Isles, and the mythical Frisland. The map's Latin texts detail aspects of the northern territories, citing Greenland's environment, where residents rely on avian and aquatic sustenance, and volcanic activity that produces both constructive and combustible material. Frisland is described as a large, primarily fish-dependent land



**Barry Lawrence Ruderman
Antique Maps Inc.**

7407 La Jolla Boulevard
La Jolla, CA 92037

www.raremaps.com

(858) 551-8500
blr@raremaps.com

**Polus Arcticus sive Tract. Septentrionalis. Coloniae, ex Officina Typographica Jani
Bussemechers (Shows Mythical Island of Frisland)**

newly navigated by the English. These textual snippets enrich our understanding of early European perspectives on these northern landscapes.

Detailed Condition: