



# Barry Lawrence Ruderman Antique Maps Inc.

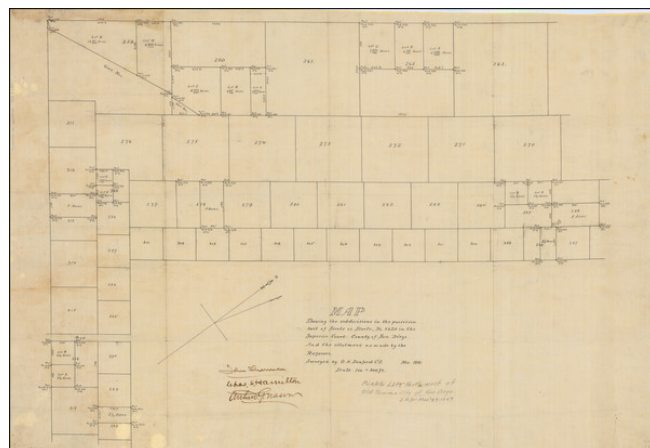
7407 La Jolla Boulevard  
La Jolla, CA 92037

www.raremaps.com

(858) 551-8500  
blr@raremaps.com

## [ West Mission Valley / University of San Diego / Midway / Sports Arena ] Map Showing the subdivisions in the partition suit of Steele vs. Steele, No. 5620 in the Superior Court. County of San Diego. And the allotment as made by the Referees, Surveyed by O. N. Sanford C.E. . . . Nov 1891. Nov. 1891

**Stock#:** 96483  
**Map Maker:** Sanford  
  
**Date:** 1891 circa  
**Place:** San Diego  
**Color:** Pen & Ink  
**Condition:** VG  
**Size:** 30 x 20.7 inches  
  
**Price:** \$ 475.00



### Description:

Interesting map of the area northwest of Old Town, as partitioned in Steele v. Steele in 1891.

The map covers a number of the original pueblo lots immediately southwest and northwest of "Old Town," as shown on the [1870 James Pascoe Map of the Pueblo Lands of San Diego](#) and the original [1869 hand drawn Pascoe map of the Pueblo Lands of San Diego](#), which pre-dates the inclusion of lot numbers for the Old Town lots.

The map extends north to Pueblo Lots 263, 270, 286 and 297 (Morena / University of San Diego on the north side of Mission Valley, west to Pueblo Lot 259 (San Diego Sports Area area) and south to Pueblo Lots 317 and 332 (Midway District).

### Detailed Condition:

Pen & Ink on drafting linen. Minor soiling.