



Barry Lawrence Ruderman Antique Maps Inc.

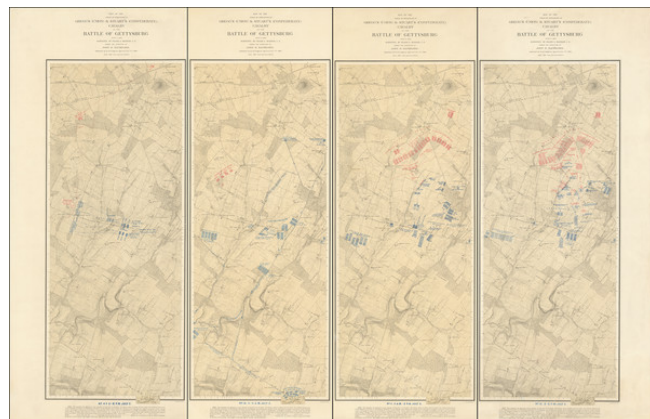
7407 La Jolla Boulevard
La Jolla, CA 92037

www.raremaps.com

(858) 551-8500
blr@raremaps.com

(Battle of Gettysburg) Map of the Field Operations of Gregg's (Union) & Stuart's (Confederate) Cavalry at the Battle of Gettysburg. July 3, 1863. (4 sheets- No. 4a, No. 10, No. 11, No. 12)

Stock#: 95477
Map Maker: Bachelder
Date: 1880
Place: n.p.
Color: Color
Condition: VG+
Size: 12 x 34 inches Each Map
Price: \$ 7,500.00



Description:

Jeb Stuart's Infamous Action at East Cavalry Field.

Rare set of four progress maps of the Battle of Gettysburg prepared by John Badger Bachelder to show the J.E.B. Stuart's July 2nd attack on the forces of Daniel McMurtie Gregg and George Armstrong Custer.

The maps were prepared in 1880, based on minute surveying and very careful historical research. The maps show one of the pivotal events of the Battle of Gettysburg. The action was a tactical draw but foiled Lee and Stuart's general strategy. Custer twice had his horse killed during the battle and famously led the 7th Michigan in a counter-attack in which he yelled, "Come on, you Wolverines!"

Jeb Stuart's conduct during the Gettysburg Campaign has come under scrutiny since the time of the Battle itself, and it continues to this day among those who see Stuart's failures as major contributing factors in Lee's eventual lack of success during the Campaign.

Stevenson (327) says of the set:

Detailed topographic map with spot elevations and contours "given for every change of four feet in elevation. . . Every object is represented, as nearly as possible as it was at the time of the battle." Shows drainage, vegetation, roads, railroads, fences, and houses with names of residents.

Minute analysis of the movement of cavalry units of both armies, with names of commanding officers and the period of time spent in a particular position. Dotted lines and arrows indicate the movement



**Barry Lawrence Ruderman
Antique Maps Inc.**

7407 La Jolla Boulevard
La Jolla, CA 92037

www.raremaps.com

(858) 551-8500
blr@raremaps.com

**(Battle of Gettysburg) Map of the Field Operations of Gregg's (Union) & Stuart's
(Confederate) Cavalry at the Battle of Gettysburg. July 3, 1863. (4 sheets- No. 4a, No.
10, No. 11, No. 12)**

of the troops.

Nelson & Pohanka, *Mapping the Civil War*, page 101:

Historian John B. Bachelder prepared this 1880 plat, one of four sequential surveys of the cavalry battle that occurred east of Gettysburg on July 3, 1863. It depicts J.E.B. Stuart's Confederate horsemen massing for an assault on General Gregg's Federal troopers.

Rarity

The set is evidently extremely rare on the antiquarian market; we locate no complete sets at auction in RBH or OldMaps.com, nor have we had the maps before.

Bachelder did another series of important Gettysburg maps titled [Map of Gettysburg July 1st, 2nd, 3rd 1863](#), which is also rare, but not nearly as rare as the present set.

Detailed Condition:

Color-lithographed maps on four unjoined sheets. A few expertly repaired tears in the margins.