



# Barry Lawrence Ruderman Antique Maps Inc.

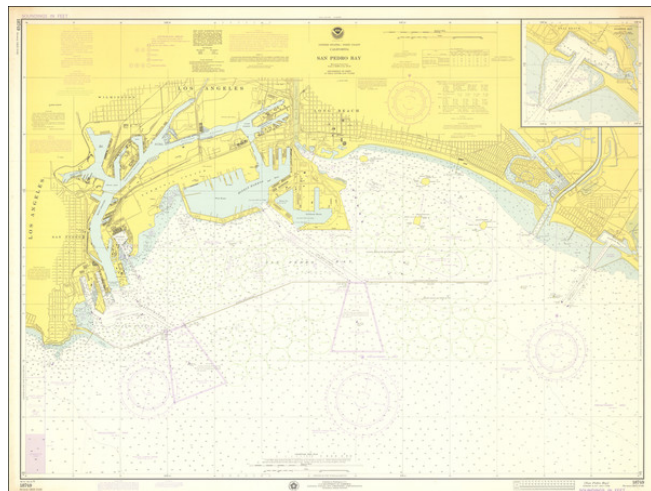
7407 La Jolla Boulevard  
La Jolla, CA 92037

[www.raremaps.com](http://www.raremaps.com)

(858) 551-8500  
[blr@raremaps.com](mailto:blr@raremaps.com)

## San Pedro Bay

**Stock#:** 95405  
**Map Maker:** National Oceanic and  
Atmospheric Administration  
  
**Date:** 1975  
**Place:** n.p.  
**Color:** Color  
**Condition:** VG  
**Size:** 35 x 46.5 inches  
  
**Price:** \$ 195.00



### Description:

Fine vintage map of San Pedro Bay, issued by NOAA, and showing the all-important Port of Long Beach.

This map, first published in 1943 and here updated to 1975, shows the bay in extremely accurate navigable detail. The map stretches from San Pedro in the north to Seal Beach in the south, and the map is orientated with west at the top. Numerous additional details, scattered throughout the map, add to its usefulness for navigation.

An inset in the upper right shows the entrance to Anaheim Bay near Seal Beach.

### Detailed Condition:

Minor toning at corners. Small amount of lingering smoke smell, but mostly dissipated and will continue to do so.