



# Barry Lawrence Ruderman Antique Maps Inc.

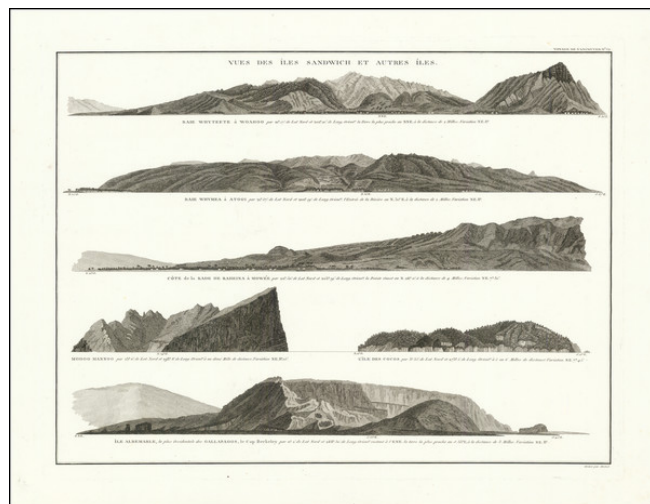
7407 La Jolla Boulevard  
La Jolla, CA 92037

[www.raremaps.com](http://www.raremaps.com)

(858) 551-8500  
[blr@raremaps.com](mailto:blr@raremaps.com)

## [Oahu, Maui, Gallapagos, Cocos, etc.] Views Des Iles Sandwich et Autres Iles

**Stock#:** 92400  
**Map Maker:** Vancouver  
**Date:** 1798  
**Place:** London  
**Color:** Uncolored  
**Condition:** VG+  
**Size:** 20 x 15 inches  
**Price:** \$ 475.00



### Description:

Detailed set of profile views of Hawaii, the Gallapagos and Codcos, from the official account of George Vancouver's Voyages.

The top view shows the Honolulu area, centered on Waikiki, with Diamond Head at the far right.

The second view shows the North Shore of Oahu, centered on Waimea Bay.

The third view covers part of West Maui, with Lahaina (Raheina) and the Kaanapali Area shown.

The bottom view shows the Island of Albemarle (now Isabella Island), one of the Gallapagos Islands, with a view of the Cocos and Modoo Mannoo above.

### Detailed Condition: