



**Barry Lawrence Ruderman
Antique Maps Inc.**

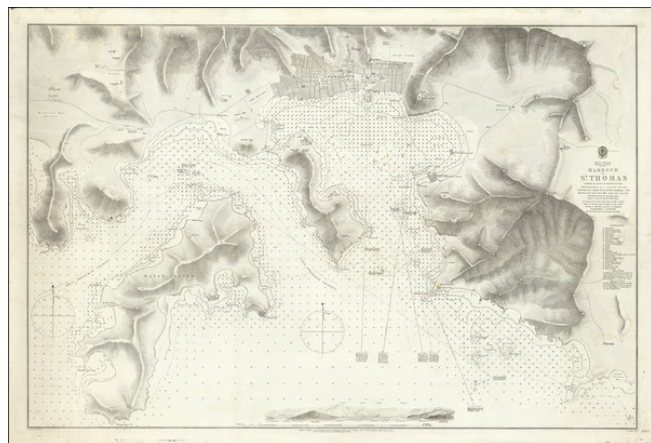
7407 La Jolla Boulevard
La Jolla, CA 92037

www.raremaps.com

(858) 551-8500
blr@raremaps.com

(Charlotte Amalia, U.S. Virgin Islands) Harbour of St. Thomas. Surveyed by Lieut G. B. Lawrence, R.N. 1851 . . . Corrections by Captain Nares, H.M.S. Challenger, 1873

Stock#: 92092
Map Maker: British Admiralty
Date: 1873
Place: London
Color: Uncolored
Condition: VG
Size: 37 x 24.5 inches
Price: \$ 2,200.00



Description:

Charlotte Amalia Harbor, St. Thomas, Virgin Islands

Detailed chart of the harbor at St. Thomas and environs, including a profile view of the approach to the harbor and remarkable details for both land and sea.

The chart includes a plan of Charlotte Amalie, and a detailed depiction of the topography, roads, and outlining settlements and structures. The lighthouses and a number of mountains and other geographical features are noted.

The chart includes extensive soundings, sailing instructions, coastal features and place names, along with shipping channels and other nautical details. Water Island is also shown in detail.

The chart is corrected to 1873, with small corrections to 1875.

Detailed Condition: