



**Barry Lawrence Ruderman
Antique Maps Inc.**

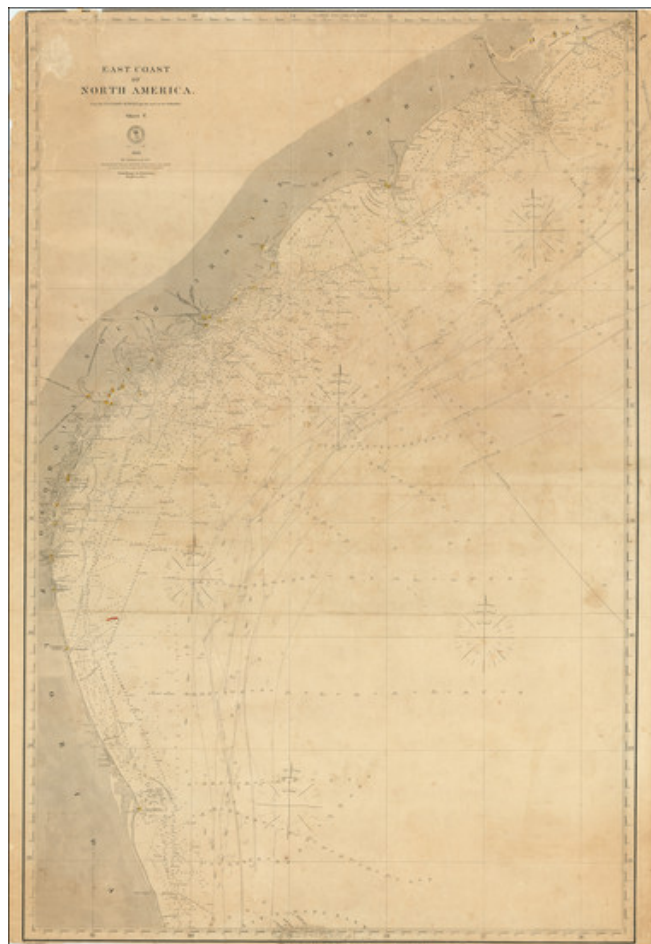
7407 La Jolla Boulevard
La Jolla, CA 92037

www.raremaps.com

(858) 551-8500
blr@raremaps.com

**[Port Lucie/Indian River to Cape Hatteras] East Coast of North America from the U.S.
Coast Survey and the most recent authorities. Sheet V. . . . 1870**

Stock#: 90697
Map Maker: U.S. Navy Hydrographic Office
Date: 1870
Place: Washington, D.C.
Color: Uncolored
Condition: Good
Size: 31 x 47 inches
Price: \$ 375.00



Description:

Well worn sea chart of the of the Southeastern Coast of the United States, published by the US Navy Hydrographical Office.

The map has been extensively annotated along the Gulf Coast by early navigators.

Detailed Condition:

On linen. Toned and soiled, with evidence of use at sea.