



# Barry Lawrence Ruderman Antique Maps Inc.

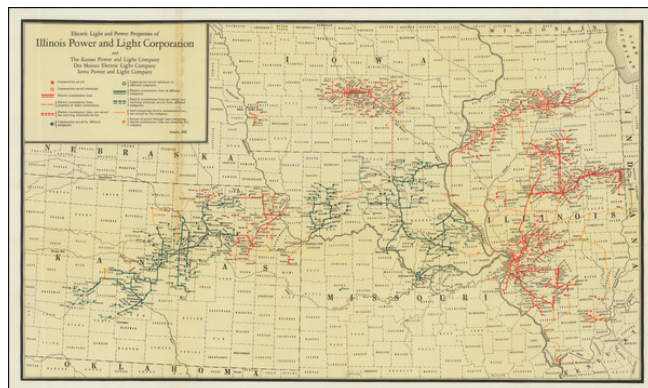
7407 La Jolla Boulevard  
La Jolla, CA 92037

www.raremaps.com

(858) 551-8500  
blr@raremaps.com

## Electric Light and Power Properties of Illinois Power and Light Corporation . . . January 1929.

**Stock#:** 88353  
**Map Maker:** Illinois Power and Light Corporation  
**Date:** 1929  
**Place:** n.p.  
**Color:** Color  
**Condition:** VG  
**Size:** 28 x 16.2 inches  
**Price:** \$ 375.00



### Description:

#### *Early Mapping of the Electrical Grid and Shared Power Loads*

Rare early map illustrating the area of service of the Illinois Power and Light Corporation and its subsidiaries, including inter-connected transmission lines showing the earliest American Electrical Grid.

The map includes symbols showing:

- Communities served and service by affiliates
- Electric Transmission lines and service by affiliates
- Proposed Electric Transmission lines and service by affiliates
- Electric Transmission lines and service by affiliates owned not owned, but receiving wholesale service
- Communities served by affiliated companies
- Sources of power through inter-connecting electric transmission lines not owned by the company

The additional company service areas shown include:

- Kansas Power and Light Company
- Des Moines Electric Light Company
- Iowa Power and Light Company

### Midwest Power Grid

The US power grid in the Midwest in the 1920s was a complex and rapidly evolving system. During this



**Barry Lawrence Ruderman  
Antique Maps Inc.**

7407 La Jolla Boulevard  
La Jolla, CA 92037

[www.raremaps.com](http://www.raremaps.com)

(858) 551-8500  
[blr@raremaps.com](mailto:blr@raremaps.com)

---

**Electric Light and Power Properties of Illinois Power and Light Corporation . . . January  
1929.**

period, the power grid in the Midwest was undergoing significant changes as new technologies were developed and new power plants were built.

In the early 1920s, the Midwest was home to a number of coal-fired power plants, which were the main source of electricity for the region. These plants were located in major cities, such as Chicago, Cleveland, and Detroit, and they provided power to the surrounding areas. However, the power grid in the Midwest was undergoing significant changes in the 1920s. New technologies, such as hydroelectric power, were being developed, and new power plants were being built.

The Illinois Power and Light Corporation was an important player in the development of the US power grid in the Midwest in the 1920s. The company was formed in 1907, and it was one of the first utilities in the region to provide electricity to rural areas.

In the 1920s, the Illinois Power and Light Corporation expanded rapidly, building new power plants and acquiring smaller utilities. The company was a pioneer in the use of hydroelectric power, and it built a number of hydroelectric dams in the region. These dams helped to increase the reliability and efficiency of the power grid, and they played a significant role in the growth of the Midwest's economy.

**Detailed Condition:**

Minor staining along one fold.