



# Barry Lawrence Ruderman Antique Maps Inc.

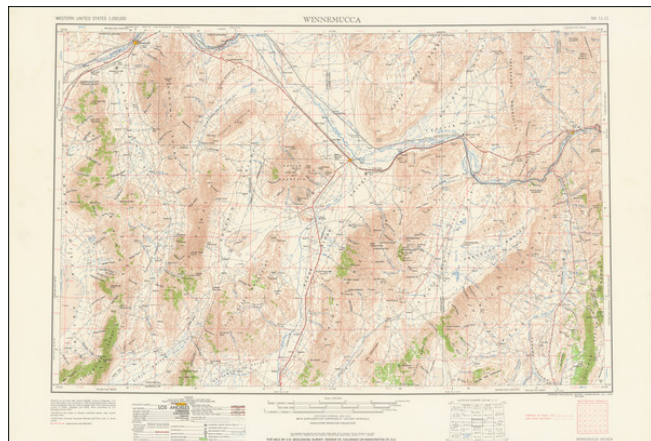
7407 La Jolla Boulevard  
La Jolla, CA 92037

[www.raremaps.com](http://www.raremaps.com)

(858) 551-8500  
[blr@raremaps.com](mailto:blr@raremaps.com)

## (North-Central Nevada) Winnemucca

**Stock#:** 84989  
**Map Maker:** U.S. Geological Survey  
**Date:** 1962  
**Place:** Washington, D.C. and Denver,  
CO  
**Color:** Color  
**Condition:** VG+  
**Size:** 27.5 x 21 inches  
**Price:** \$ 125.00



### Description:

Survey map of the area around Winnemucca, bisected by the Humboldt and Reese Rivers. Various mountain ranges, valleys, canyons, rivers, mines, ranches, as well as the Swamp Cedars ("The Cedars"), the Beowawe Geysers (now the site of a geothermal power plant), and the Battle Mountain Indian Colony (of the Te-Moak Tribe of Western Shoshone Indians) are shown.

### Detailed Condition:

Some wrinkling in top margin.