



# Barry Lawrence Ruderman Antique Maps Inc.

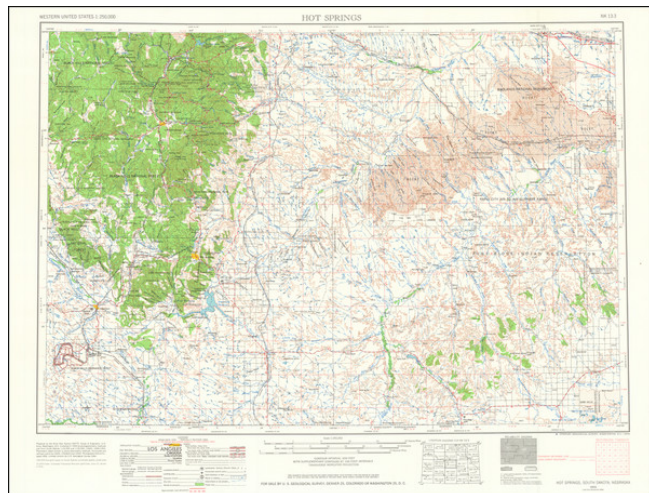
7407 La Jolla Boulevard  
La Jolla, CA 92037

[www.raremaps.com](http://www.raremaps.com)

(858) 551-8500  
[blr@raremaps.com](mailto:blr@raremaps.com)

## (Southwestern South Dakota) Hot Springs

**Stock#:** 84983  
**Map Maker:** U.S. Geological Survey  
**Date:** 1964  
**Place:** Washington, D.C.  
**Color:** Color  
**Condition:** VG+  
**Size:** 26.5 x 21 inches  
**Price:** \$ 125.00



### Description:

Black Hills National Forest, Mount Rushmore and Jewel Cave National Monuments, Custer State Park, Wind Cave National Park, Black Hills Ordnance Depot, Rapid City Air to Air Gunnery Range, and parts of Badlands National Monument and Pine Ridge Reservation, including Wounded Knee and Porcupine, are shown.

### Detailed Condition:

Slight paper wrinkling in top margin.