



# Barry Lawrence Ruderman Antique Maps Inc.

7407 La Jolla Boulevard  
La Jolla, CA 92037

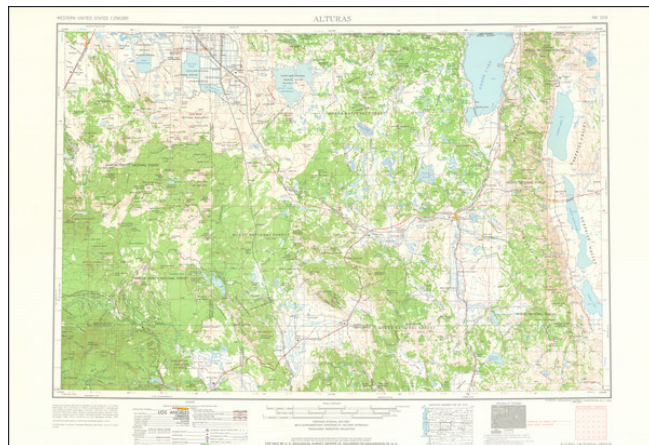
[www.raremaps.com](http://www.raremaps.com)

(858) 551-8500  
[blr@raremaps.com](mailto:blr@raremaps.com)

---

## (Modoc) Alturas

**Stock#:** 84977  
**Map Maker:** U.S. Geological Survey  
**Date:** 1962  
**Place:** Denver and Washington, D.C.  
**Color:** Color  
**Condition:** VG+  
**Size:** 27 x 18.25 inches  
**Price:** \$ 125.00



### Description:

Fine vintage topographic map of the Modoc area in the far northeastern corner of California.

The map stretches eastwards the year-round and seasonal lakes near the Oregon-Nevada-California border. Westwards, the map extends into Shasta-Trinity national forest and Siskiyou and Shasta Counties. Lava Beds National Monument, just south of Tule Lake National Wildlife Refuge, was established as a national monument in 1925.

This map was published by the USGS in 1962 based on earlier topographic maps and photogrammetric data from the late 1940s and early 1950s.

### Detailed Condition: