



Barry Lawrence Ruderman Antique Maps Inc.

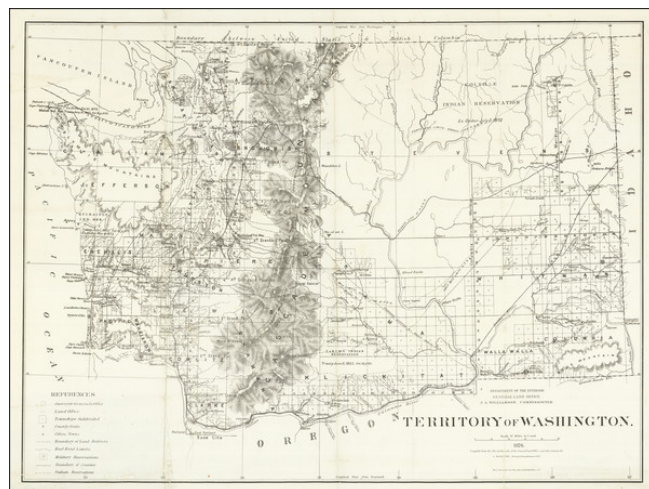
7407 La Jolla Boulevard
La Jolla, CA 92037

www.raremaps.com

(858) 551-8500
blr@raremaps.com

Territory of Washington . . . 1876

Stock#: 84624
Map Maker: General Land Office
Date: 1876
Place: Washington
Color: Uncolored
Condition: VG
Size: 31 x 23 inches
Price: SOLD



Description:

Fine, Detailed Map of the Washington Territory

Large and intricate map of Washington Territory issued by the General Land Office under the direction of Principal Draughtsman Charles Roeser. It shows Washington just after it attained its present boundaries, as Idaho Territory had been created in 1863.

This map one of the largest and most detailed maps of Washington Territory published to this date (1876).

The map shows the counties and land districts as they then existed, along with railroad company boundaries, towns and cities (with county seats), and land offices. The topographical and Indian reservation detail is especially noteworthy. Also of interest are the township outlines that had been laid out; in 1867, Washington Territory was still only sparsely populated, with more settlers expected to arrive and put down roots, especially east of the Cascade Mountains.

Then, as now, the majority of the settlements are west of the Cascades, near the lucrative trading corridor of Puget Sound. The earliest immigrant communities were in that region, as the Hudson's Bay Company had outposts on the Columbia, Cowlitz, and Nisqually Rivers. Fort Vancouver, on the Columbia, was one of the first towns, joined by Olympia, Whidbey Island, Port Townsend, Port Madison, and Seattle. Inland, settlements were also tied to Company outposts or to missions, including Walla Walla and Colville in Eastern Washington.

The Indian reservations are a testament to the indigenous inhabitants of Washington Territory who still lived there after white settlement and continue to live there today. There are 29 reservations in



**Barry Lawrence Ruderman
Antique Maps Inc.**

7407 La Jolla Boulevard
La Jolla, CA 92037

www.raremaps.com

(858) 551-8500
blr@raremaps.com

Territory of Washington . . . 1876

Washington today. On this map, reservations are shown including the relevant treaty or executive order that formalized their relationship with the US Government.

Detailed Condition:

Old folds flattened. Few repaired tears at the edges.