



# Barry Lawrence Ruderman Antique Maps Inc.

7407 La Jolla Boulevard  
La Jolla, CA 92037

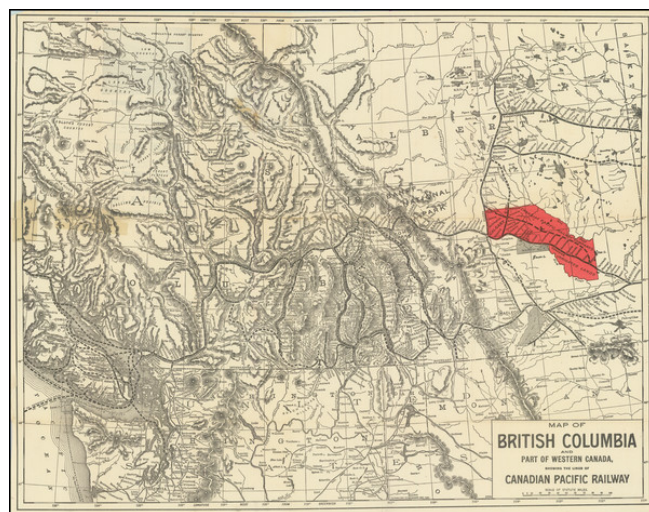
[www.raremaps.com](http://www.raremaps.com)

(858) 551-8500  
[blr@raremaps.com](mailto:blr@raremaps.com)

---

## Map of British Columbia and Part of Western Canada, Showing the Lines of Canadian Pacific Railway

**Stock#:** 83906  
**Map Maker:** Poole Brothers  
**Date:** 1895  
**Place:** Chicago  
**Color:** Uncolored  
**Condition:** VG  
**Size:** 18.5 x 14.38 inches  
**Price:** SOLD



### Description:

#### *The Canadian Pacific Railway Company's Irrigated Lands Southeast of Calgary*

Rare map of the Canadian Pacific Railway, tracking the route of the lines between Medicine Hat and Dunmore to New Westminster and Vancouver.

The map shows the region from Vancouver Island East to the Alberta-Saskatchewan border. Also includes some of the Northern United States. While the focal point of the map is on the developing Rail lines, the topographical detail is quite impressive, along with the location of many early roads.

The Canadian Pacific Railway (CPR) is was incorporated in 1881.

The railway was originally built between Eastern Canada and British Columbia between 1881 and 1885 (connecting with Ottawa Valley and Georgian Bay area lines built earlier), fulfilling a promise extended to British Columbia when it entered Confederation in 1871. It was Canada's first transcontinental railway, but no longer reaches the Atlantic coast. Primarily a freight railway, the CPR was for decades the only practical means of long-distance passenger transport in most regions of Canada, and was instrumental in the settlement and development of Western Canada.

### Rarity

The map is very rare on the market. This is the first example of this 1909 state of the map we have ever



**Barry Lawrence Ruderman  
Antique Maps Inc.**

7407 La Jolla Boulevard  
La Jolla, CA 92037

[www.raremaps.com](http://www.raremaps.com)

(858) 551-8500  
[blr@raremaps.com](mailto:blr@raremaps.com)

---

**Map of British Columbia and Part of Western Canada, Showing the Lines of Canadian  
Pacific Railway**

seen.

**Detailed Condition:**