



Barry Lawrence Ruderman Antique Maps Inc.

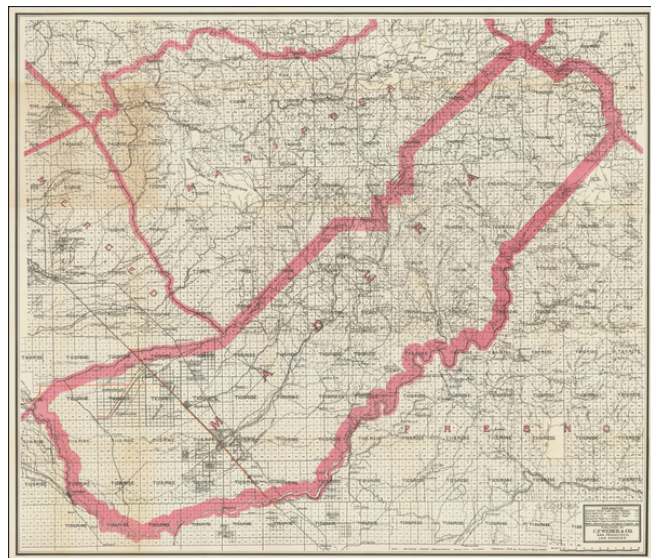
7407 La Jolla Boulevard
La Jolla, CA 92037

www.raremaps.com

(858) 551-8500
blr@raremaps.com

"Progressive" Map of Madera County, California

Stock#: 83317
Map Maker: Weber Co.
Date: 1914
Place: San Francisco and Los Angeles
Color: Outline Color
Condition: VG
Size: 30.25 x 26.13 inches
Price: SOLD



Description:

With Five Competing Gas & Electric Company Lines Shown!

Scarce map of Madera County, published by C.F. Weber and Punnett Brothers, the leading California County map makers from the early part of the 20th Century.

The map illustrates Madera County and parts of the neighboring Fresno, Mariposa, and Merced Counties, with the entire map subdivided by townships and sections. Additional details include:

- Electric Power Lines of Pacific Gas & Electric Company lines
- Oro Electric Company lines
- Sierra & San Francisco Power Company lines
- Great Western Power Company lines
- Western States Gas & Electric Company lines
- Steam Railways
- Electric Railways
- Wagon Roads
- Trails
- Reclamation Projects
- Irrigation Projects



**Barry Lawrence Ruderman
Antique Maps Inc.**

7407 La Jolla Boulevard
La Jolla, CA 92037

www.raremaps.com

(858) 551-8500
blr@raremaps.com

"Progressive" Map of Madera County, California

Detailed Condition:

Front wrapper detached. Minor discoloration along two panels and some minor loss along folds.