



# Barry Lawrence Ruderman Antique Maps Inc.

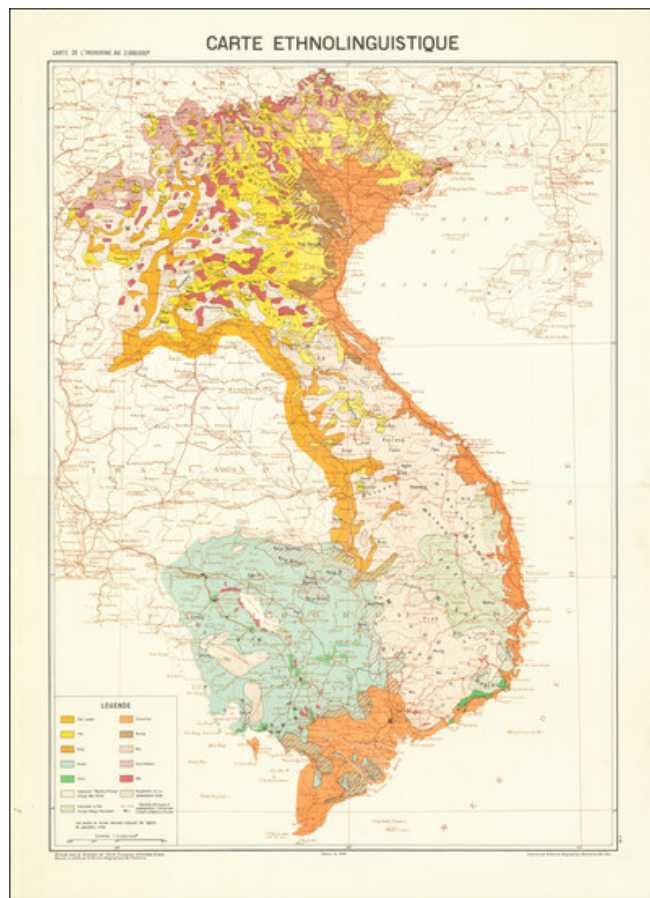
7407 La Jolla Boulevard  
La Jolla, CA 92037

www.raremaps.com

(858) 551-8500  
blr@raremaps.com

## [Ethno-Linguistic Map of Vietnam, Laos and Cambodia] Carte Ethnolinguistique

**Stock#:** 82493  
**Map Maker:** Service Geographique de l'Indo-Chine  
**Date:** 1949  
**Place:** Hanoi  
**Color:** Color  
**Condition:** VG+  
**Size:** 23.75 x 34.25 inches  
**Price:** SOLD



### Description:

Detailed ethno-linguistic map of Indo-China.

The map uses a colored key to differentiate ethnic populations and languages.

The map was published under the auspices of the *l'Ecole Française d'Extrême-Orient*.

### Detailed Condition: