



## Barry Lawrence Ruderman Antique Maps Inc.

7407 La Jolla Boulevard  
La Jolla, CA 92037

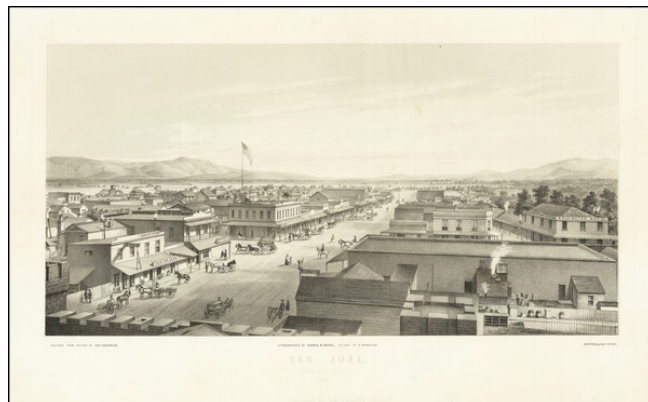
www.raremaps.com

(858) 551-8500  
blr@raremaps.com

---

### San Jose, From City Hall. 1858. Published by Levi Goodrich, San Jose.

**Stock#:** 81935  
**Map Maker:** Kuchel & Dresel / Goodrich  
**Date:** 1858  
**Place:** San Jose  
**Color:** Uncolored  
**Condition:** VG  
**Size:** 19.5 x 12 inches  
**Price:** SOLD



#### Description:

Extremely rare California bird's eye view, drawn and published by Levi Goodrich in San Jose, and lithographed by Kuchel & Dresel in San Francisco. The lithograph was printed by the famous San Francisco printers Britton & Rey.

The image shows San Jose from City Hall on North Market Street looking south toward Santa Clara Street.

A number of local businesses are named, including:

- Tribune Office
- Levy Bros.
- F. Devoto's Store
- American Express Books & Stationary
- Washington Hotel
- City Drug Store
- Jones & Williams
- W. Hardy

#### Levi Goodrich

The map was drawn by San Jose Architect Levi Goodrich (1822-1887). Goodrich trained under his father in New York, before being lured west by the Gold Rush in 1849. During the next several years he worked as a sketch artist for lithographers while building an architecture practice. Goodrich designed the Santa Clara County Courthouse and jail, the State Normal School, the Bank of San Jose, and the courthouses of Monterey and San Diego counties



**Barry Lawrence Ruderman  
Antique Maps Inc.**

7407 La Jolla Boulevard  
La Jolla, CA 92037

[www.raremaps.com](http://www.raremaps.com)

(858) 551-8500  
[blr@raremaps.com](mailto:blr@raremaps.com)

---

**San Jose, From City Hall. 1858. Published by Levi Goodrich, San Jose.**

Goodrich was the second husband of Sarah L. Knox-Goodrich (1825-1903), a prominent women's rights activist who worked for women's suffrage in California in the late nineteenth century.

**Rarity**

The view is extremely rare. Repts locates 2 copies (California Historical Society and Bancroft Library). We also note an example at the San Jose Public Library.

**Detailed Condition:**

Expertly mended tear from left edge just touching the image.