



Barry Lawrence Ruderman Antique Maps Inc.

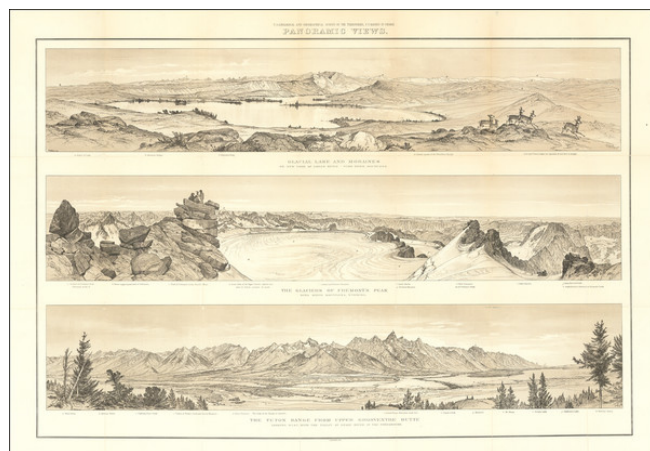
7407 La Jolla Boulevard
La Jolla, CA 92037

www.raremaps.com

(858) 551-8500
blr@raremaps.com

(Wyoming) Panoramic Views | Glacier Lake and Moraines | The Glaciers of Fremont's Peak | The Teton Range From Upper Grosventre Butte

Stock#: 81903
Map Maker: Hayden
Date: 1879
Place: Washington, D. C.
Color: Color
Condition: VG+
Size: 34.5 x 24 inches
Price: SOLD



Description:

Striking set of panoramic views of the dramatic terrain in Western Wyoming, published for F.V. Hayden's survey.

The bottom of the three views shows the Teton Range from Jackson Lake to Teton Pass. The center view depicts a party of surveyors atop a rock formation near Fremont's Peak. The top view, entitled Glacier Lake And Moraines On New Fork Of Green River-Wind River Mountains, captures the serenity of a mountain lake and has a small herd of elk to the right.

The view appeared in Hayden's United States Geological and Geographic Survey of the Territory, Embraced by Idaho and Wyoming..., and is based on surveys conducted in 1877 and 1878.

In 1869, Ferdinand Hayden was given a large appropriation and made head of the United States Geological Survey of the Territories, the biggest and best-known of the Great Surveys. Originally just focused on Nebraska, it soon expanded to cover all the territories around the Rocky Mountains. The primary purpose of the expeditions to the Rocky Mountains was to evaluate the geological and mineral content of the regions. In addition to his interest in western minerals, Hayden was also one of the first to see the West as the land of the nature-loving tourist. In 1871, Hayden made an expedition into the Yellowstone Geyser Region resulting in spectacular photographs taken by William H. Jackson. The Yellowstone expedition made Hayden famous, but perhaps his most important was the detailed exploration and mapping of Colorado. Hayden issued reports between 1867 and 1883, including information on the geography, geology, ethnology and many other scientific subjects. His surveys were a landmark in the history of the exploration and documentation of the American West.



**Barry Lawrence Ruderman
Antique Maps Inc.**

7407 La Jolla Boulevard
La Jolla, CA 92037

www.raremaps.com

(858) 551-8500
blr@raremaps.com

**(Wyoming) Panoramic Views | Glacier Lake and Moraines | The Glaciers of Fremont's
Peak | The Teton Range From Upper Grosventre Butte**

Detailed Condition:

Modern archival linen backing.