



Barry Lawrence Ruderman Antique Maps Inc.

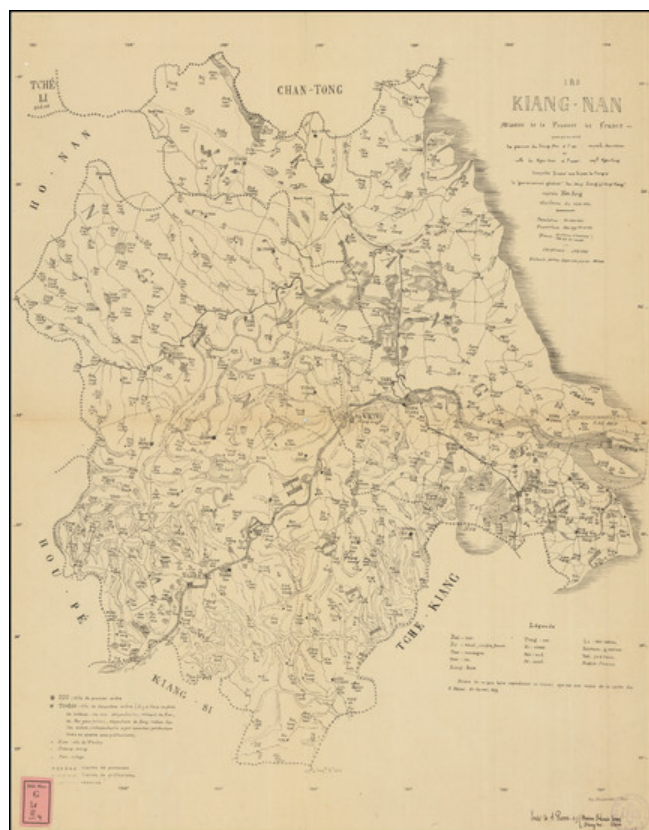
7407 La Jolla Boulevard
La Jolla, CA 92037

www.raremaps.com

(858) 551-8500
blr@raremaps.com

Kiang-Nan Mission de la Province de France ~ comprenant la province du Kiang-Sou a l'est capitale Sou-tcheou et celle du Ngan Hoei a l'ouest capitale Ngan-King lesquelles forment avec la prov. du Kiang-si le "gouvernement general" des-deux Kiang (Leang-Kiang) capitale residence du vice roi

Stock#: 80467
Map Maker: Zi Ka Wei Mission
Date: 1879 circa
Place: Shanghai
Color: Uncolored
Condition: VG
Size: 17.25 x 22 inches
Price: SOLD



Description:

Jesuit Map of Kiang-Nan Province

Rare Jesuit map covering the area between Shanghai and Nanjing, centered on the course of the Yangtze River.

Curiously, the map includes a note that it is the work of P. Pfister and should not be reproduced. P. Pfister would almost certainly be Pere (father) Aloys Pfister (1833-1891), a French Jesuit, historian and sinologist who worked as a missionary in China. His best-known works are his *Notices biographiques et bibliographiques sur les Jésuites de l'ancienne mission de China. 1552-1773* (Biographical and bibliographical notes on the Jesuits of the former mission in China. 1552-1773), which first appeared in



**Barry Lawrence Ruderman
Antique Maps Inc.**

7407 La Jolla Boulevard
La Jolla, CA 92037

www.raremaps.com

(858) 551-8500
blr@raremaps.com

Kiang-Nan Mission de la Province de France ~ comprenant la province du Kiang-Sou a l'est capitale Sou-tcheou et celle du Ngan Hoei a l'ouest capitale Ngan-King lesquelles forment avec la prov. du Kiang-si le "gouvernement general" des-deux Kiang (Leang-Kiang) capitale residence du vice roi

Shanghai in 1932 and 1934 in the Jesuit book series of *Variétés sinologiques* (volumes 59 and 60) and was also translated into Chinese.

The map was produced under the direction of the Roman Catholic Apostolic Vicariate of Kiang-nan, a missionary jurisdiction in mainland China, comprising the two imperial provinces of Jiangsu and Anhui, often referred to as Jiangnan or Kiang-nan.

The map was produced at Zi-ka-wei, where the the Jesuit Fathers established themselves in 1847, near the tomb of Paul Xu, at which period of the orphanages of the mission were commenced.

Detailed Condition: