



# Barry Lawrence Ruderman Antique Maps Inc.

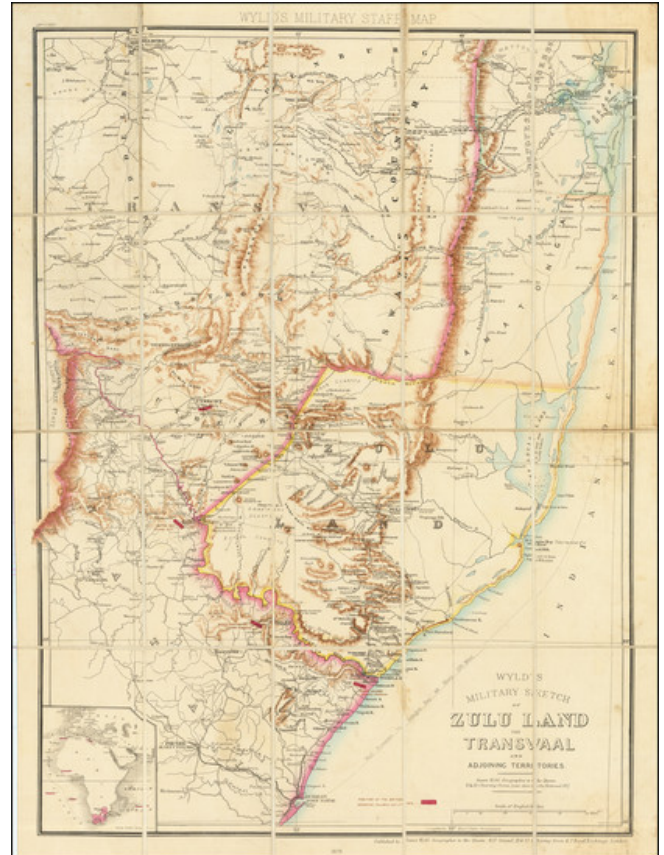
7407 La Jolla Boulevard  
La Jolla, CA 92037

[www.raremaps.com](http://www.raremaps.com)

(858) 551-8500  
[blr@raremaps.com](mailto:blr@raremaps.com)

## Wyld's Military Sketch of Zulu Land the Transvaal and Adjoining Territories . . . 1879

**Stock#:** 80269  
**Map Maker:** Wyld  
**Date:** 1879  
**Place:** London  
**Color:** Hand Colored  
**Condition:** VG  
**Size:** 20 x 27.5 inches  
**Price:** \$ 795.00



### Description:

Rare separately published map of Zulu Land and the Transvaal, published in London by Wyld.

The map is overprinted with Red noting the Position of the British Advancing Columns. The present map was specifically made for use by British Military Staff, as noted by the title at the top.

This example bears the names of two British soldiers:

- Captain Robert Frederick Willoughby: Willoughby served with the 21st Royal Scots Fusiliers in 1879. He served at Fort Napier, Pietermaritzburg, where he commanded two depot companies, before re-joining the main battalion in August, 1879. He was at the storming of the stronghold of Sekhukhune in late 1879, where he was slightly wounded.
- Captain D. ??? 21st Royal Scots Fusiliers



**Barry Lawrence Ruderman  
Antique Maps Inc.**

7407 La Jolla Boulevard  
La Jolla, CA 92037

[www.raremaps.com](http://www.raremaps.com)

(858) 551-8500  
[blr@raremaps.com](mailto:blr@raremaps.com)

---

**Wyld's Military Sketch of Zulu Land the Transvaal and Adjoining Territories . . . 1879**

**Detailed Condition:**

Segmented and laid on linen, as issued. With original covers and names of two early owners.