



**Barry Lawrence Ruderman
Antique Maps Inc.**

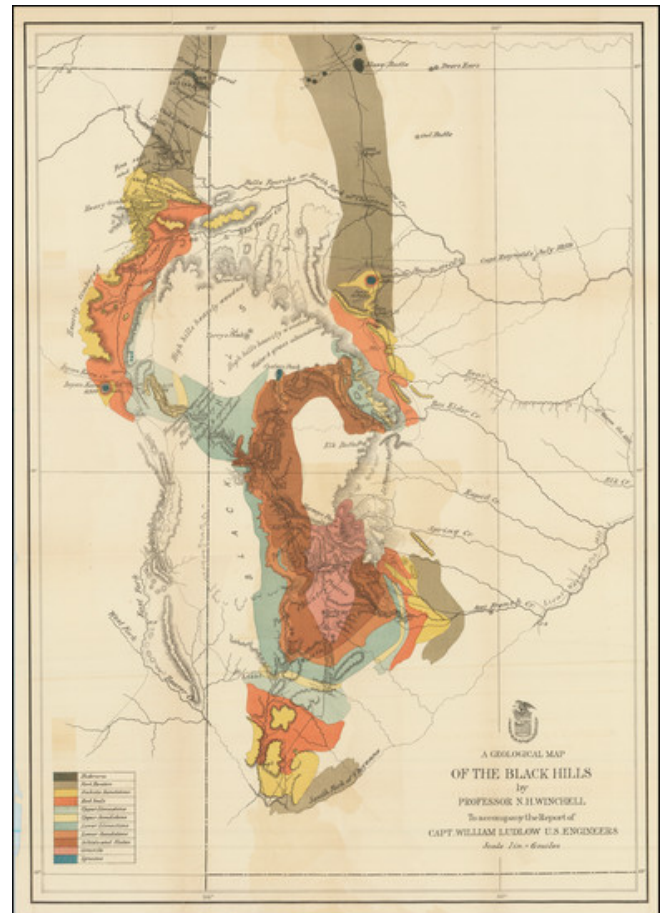
7407 La Jolla Boulevard
La Jolla, CA 92037

www.raremaps.com

(858) 551-8500
blr@raremaps.com

**A Geological Map of the Black Hills by Professor N.H. Winchell To Accompany the
Report of Capt. William Ludlow US Engineers**

Stock#: 77274
Map Maker: Ludlow
Date: 1874
Place: Washington, DC
Color: Color
Condition: VG
Size: 17.5 x 25.5 inches
Price: \$ 275.00



Description:

Important early geological survey map of the Black Hills region, undertaken by William Ludlow, while under the command of George Custer.

In 1874, a large group of cavalymen under the command of Lt. Col. George Armstrong Custer moved into the Black Hills region of Dakota Territory. Though officially American Indian Territory according to the 1868 Treaty of Laramie, rumors had been circulating since the early 19th century that this region harbored rich deposits of gold. Custer and his men were sent to investigate. The expedition included William Ludlow, an officer of the Army Corps of engineers, whose commission was to explore and survey the region, identifying in the process if the rumored gold did indeed exist.



**Barry Lawrence Ruderman
Antique Maps Inc.**

7407 La Jolla Boulevard
La Jolla, CA 92037

www.raremaps.com

(858) 551-8500
blr@raremaps.com

**A Geological Map of the Black Hills by Professor N.H. Winchell To Accompany the
Report of Capt. William Ludlow US Engineers**

Ludlow and Custer traveled west from Fort Lincoln on the Missouri River (near Bismarck), to the Powder River, then on to the Black Hills. The map meticulously documents the survey triangulation points and encampments. Ludlow offers commentary on the territory such as 'High hills heavily timbered water and grass abundant,' 'grass and water good,' 'bad lands' and 'soil and loose dry clay.' Ultimately, Custer and his men did find gold in the Black Hills, leading to the 1876 Black Hills Gold Rush.

The geological information on this map was prepared by Newton Horace Winchell, who accompanied the 1874 expedition. He is most known for his work on the geology of Minnesota.

Detailed Condition:

Minor offsetting. Old folds. Small uneven tear in lower left margin, away from image.