



Barry Lawrence Ruderman Antique Maps Inc.

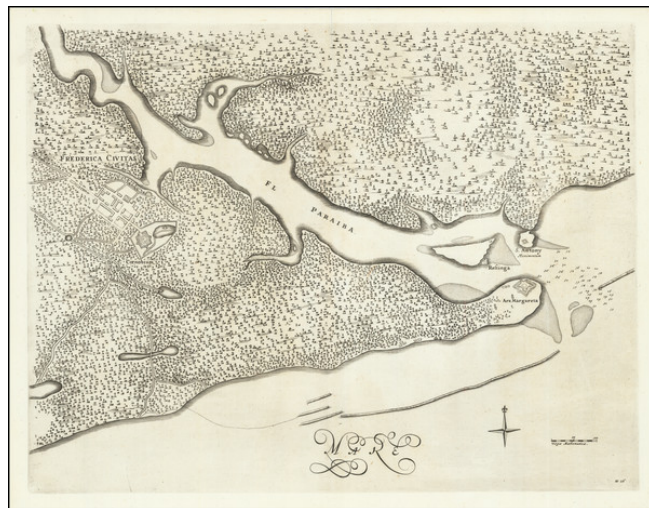
7407 La Jolla Boulevard
La Jolla, CA 92037

www.raremaps.com

(858) 551-8500
blr@raremaps.com

(João Pessoa / Fredrikstad, Brazil)

Stock#: 74565
Map Maker: Blaeu / Marcgraf
Date: 1647
Place: Amsterdam
Color: Uncolored
Condition: VG+
Size: 20 x 15.5 inches
Price: \$ 335.00



Description:

João Pessoa and Fortaleza Santa Catarina Do Cabedelo

Rare map of the area between Frederica Civitas (Fredrikstad / João Pessoa) and Arx Margareta (Fortaleza Santa Catarina Do Cabedelo), showing the course of the Rio Paraíba from João Pessoa to the fort of Santa Catarina do Cabedelo, published by Johannes Blaeu in 1647.

João Pessoa was founded on August 5, 1585, by Portuguese settlers. Called "Royal City of Our Lady of the Snows", its first structures were on the banks of the Sanhauá River, a tributary of the Paraíba River, now known as Porto do Varadouro. In 1588, the city was renamed "Philipeia of Our Lady of the Snows", in honor of King Philip II, who at the time accumulated the thrones of Spain and Portugal.

Around 1586, the Portuguese built a small square fortification, Santa Catarina, on the strategic point of Cabedelo. After an unsuccessful attack in 1631, the Dutch conquered the fort in 1634, rebuilt it to a large extent and renamed it Margareta.

In 1634, attracted by the sugar wealth of the then-capital of the Paraíba, the Dutch invaded and named it Fredrikstad (Frederick City), in honor of the prince of Orange, Frederick of Orange. After the decline of New Holland and with the departure of the Dutch, the city was again dominated by the Portuguese and acquired the name "Parahyba do Norte" in 1654.

Also in 1654, after twenty years of Dutch rule, the fort again fell into Portuguese hands. After 1654, the Portuguese reconstructed the fort in stone around the Dutch ground plan, moving the gate to the



**Barry Lawrence Ruderman
Antique Maps Inc.**

7407 La Jolla Boulevard
La Jolla, CA 92037

www.raremaps.com

(858) 551-8500
blr@raremaps.com

(João Pessoa / Fredrikstad, Brazil)

landward side.

Detailed Condition: