



**Barry Lawrence Ruderman
Antique Maps Inc.**

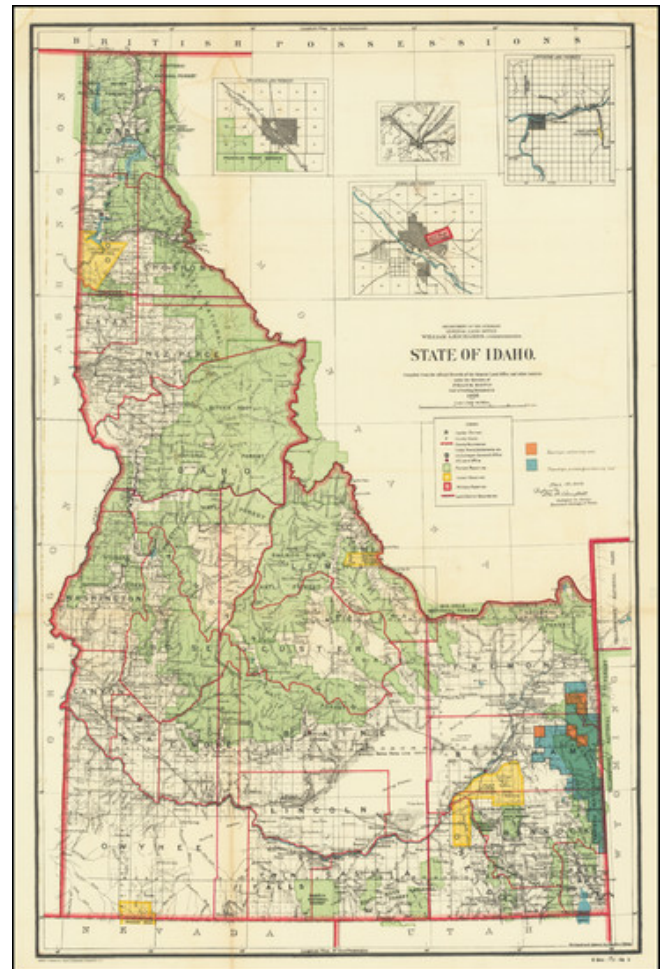
7407 La Jolla Boulevard
La Jolla, CA 92037

www.raremaps.com

(858) 551-8500
blr@raremaps.com

State of Idaho. Compiled from the official Records of the General Land Office and other sources under the direction of Frank Bond... 1905

Stock#: 72839
Map Maker: General Land Office
Date: 1906
Place: Washington, D.C.
Color: Color
Condition: VG
Size: 14 x 22 inches
Price: SOLD



Description:

Attractive color-lithographed folding map of Idaho, drawn by Charles J. Helm for the U.S. GLO, issued in 1906.

This would seem to be a variant edition of the 1905 map, with specific data on townships definitely and probably containing coal. As such, it bears the facsimile signature of the Geologist-In-Charge, Economic Geology of Fuels.

Indian reservations, forest reserves, U.S. Land Offices, U.S. Surveyor-Generals' Offices, and various other details are marked on the map.



**Barry Lawrence Ruderman
Antique Maps Inc.**

7407 La Jolla Boulevard
La Jolla, CA 92037

www.raremaps.com

(858) 551-8500
blr@raremaps.com

**State of Idaho. Compiled from the official Records of the General Land Office and other
sources under the direction of Frank Bond... 1905**

Photo-lithographed by Andrew B. Graham Co., of Washington, D.C.

Detailed Condition:

Folding map with a few faint dampstains and a short fold separation that has been closed on verso with archival tape.