



Barry Lawrence Ruderman Antique Maps Inc.

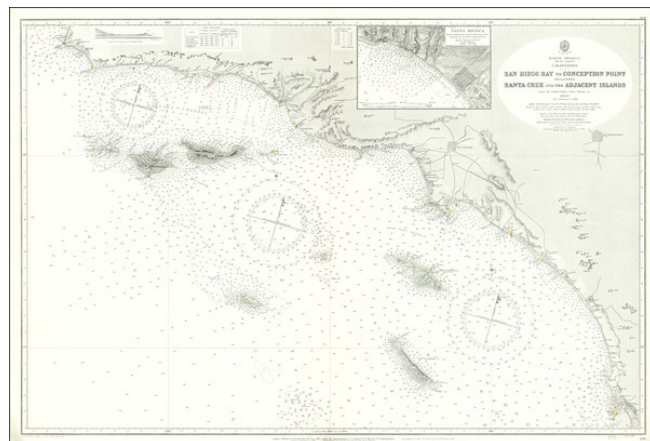
7407 La Jolla Boulevard
La Jolla, CA 92037

www.raremaps.com

(858) 551-8500
blr@raremaps.com

San Diego Bay to Conception Point Including Santa Cruz and Adjacent Islands . . . 1883. with corrections to 1926

Stock#: 72404
Map Maker: British Admiralty
Date: 1928 (1928)
Place: London
Color: Uncolored
Condition: VG+
Size: 39 x 26 inches
Price: SOLD



Description:

Fine large British sea chart of the Southern California Coastline, published in 1928, with small corrections to 1957.

The chart extends from San Diego to Point Conception and Arguello Point, centered on Santa Monica and the LA Basin. Offshore islands include Catalina, the Channel Islands and San Clemente Island.

Includes a large town plan of Santa Monica.

The map is highly detailed, showing soundings, lighthouses, and some topographical details and railroads. The focus on lighted air fields is also quite interesting.

A scarce nautical chart--this is the first example of the map we have ever seen for any date.

Detailed Condition: