



# Barry Lawrence Ruderman Antique Maps Inc.

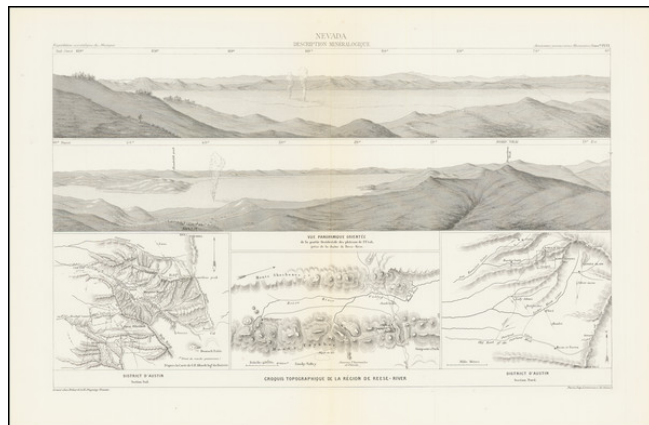
7407 La Jolla Boulevard  
La Jolla, CA 92037

[www.raremaps.com](http://www.raremaps.com)

(858) 551-8500  
[blr@raremaps.com](mailto:blr@raremaps.com)

## (Reese River and Austin Mining Districts)

**Stock#:** 71803  
**Map Maker:** Guillemin-Tarayre  
**Date:** 1869  
**Place:** Paris  
**Color:** Uncolored  
**Condition:** VG  
**Size:** 17.5 x 11 inches  
**Price:** SOLD



### Description:

#### *The Austin and Reese River Mining Districts with Panoramic Views Toward Utah*

Scarce image of three Nevada mining districts in Central Nevada, along with two views looking toward Utah.

One the Austin maps shows the Old Road of the Overland Mail Route.

Guillemin-Tarayre's map is part of a rare set of scientific works published by the French government. The map illustrated a section that relates to geology and mining in California and Nevada. In 1864, as a result of a French military expedition to Mexico, the Commission Scientifique du Mexique was established. At the time, mining in California and Nevada were the focal point of a great deal of interest in Europe.

### Detailed Condition: