



# Barry Lawrence Ruderman Antique Maps Inc.

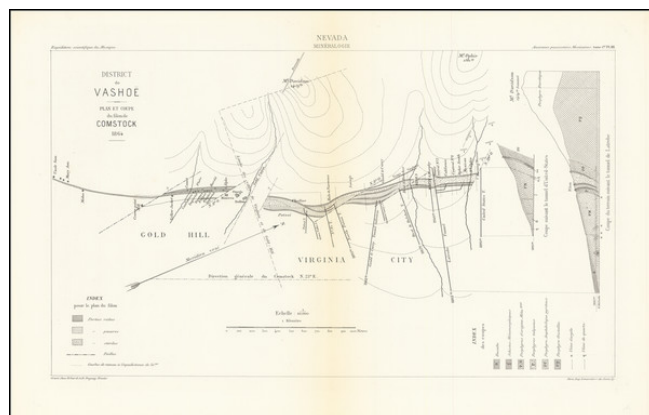
7407 La Jolla Boulevard  
La Jolla, CA 92037

[www.raremaps.com](http://www.raremaps.com)

(858) 551-8500  
[blr@raremaps.com](mailto:blr@raremaps.com)

## (Comstock / Washoe Mining District) District de Washoe -- Plan et Coupe du filon de Comstock 1864

**Stock#:** 71681  
**Map Maker:** Guillemin-Tarayre  
**Date:** 1869  
**Place:** Paris  
**Color:** Uncolored  
**Condition:** VG  
**Size:** 17.5 x 10 inches  
**Price:** SOLD



### Description:

#### *Rare Early Geological Map of the Comstock / Washoe Mining District*

Interesting model illustrating the area around Gold Hill and Virginia City, illustrating the mining regions of the Comstock.

The map is oriented with west at the top and includes two profile views at the right.

Guillemin-Tarayre's map is part of a rare set of scientific works published by the French government. The map illustrated a section that relates to geology and mining in California and Nevada. In 1864, as a result of a French military expedition to Mexico, the Commission Scientifique du Mexique was established. At the time, mining in California and Nevada were the focal point of a great deal of interest in Europe.

### Detailed Condition: