



# Barry Lawrence Ruderman Antique Maps Inc.

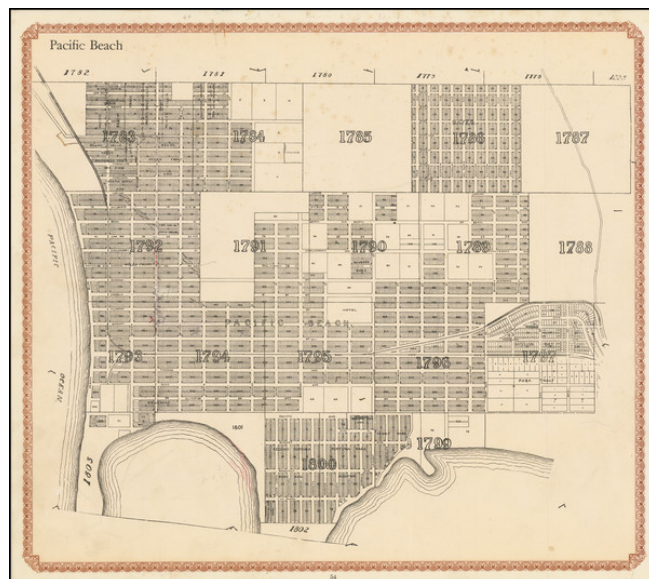
7407 La Jolla Boulevard  
La Jolla, CA 92037

[www.raremaps.com](http://www.raremaps.com)

(858) 551-8500  
[blr@raremaps.com](mailto:blr@raremaps.com)

## Pacific Beach

**Stock#:** 71616  
**Map Maker:** Alexander  
**Date:** 1912  
**Place:** Los Angeles and San Francisco  
**Color:** Color  
**Condition:** VG+  
**Size:** 16.5 x 14.5 inches  
**Price:** SOLD



### Description:

#### *The First Atlas Map of Pacific Beach, California*

The map provides a fine town plan of Pacific Beach, prior to the construction of Crystal Pier in 1927.

The present example has been annotated in an early hand, primarily noting the location of lots and lot splits.

The electric streetcar route on Grand Avenue is shown.

This is from W.E. Alexander's 1912 *Plat Book of San Diego County, California* published by the Pacific Plat Book Company of Los Angeles and San Francisco.

### Rarity

In over 25 years of business in San Diego, this is the first time we have offered the map for sale.

### Detailed Condition:

Minor soiling and foxing.