



## Barry Lawrence Ruderman Antique Maps Inc.

7407 La Jolla Boulevard  
La Jolla, CA 92037

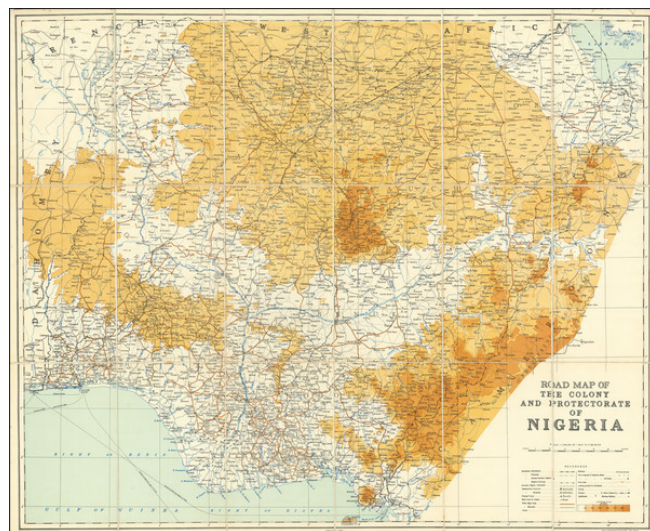
[www.raremaps.com](http://www.raremaps.com)

(858) 551-8500  
[blr@raremaps.com](mailto:blr@raremaps.com)

---

### Road Map of the Colony and Protectorate of Nigeria

**Stock#:** 71435  
**Map Maker:** Survey Department, Nigeria  
**Date:** 1950  
**Place:** Lagos, Nigeria  
**Color:** Color  
**Condition:** VG+  
**Size:** 32 x 26 inches  
**Price:** \$ 295.00



#### Description:

Detailed Lagos-published map of Nigeria published 10 years before the nation's independence from Great Britain.

The map features detailed political boundary information, as well as information about towns, roads, railways, and communications, such as wireless stations.

Topography is represented by a color gradient.

#### Detailed Condition:

Folding map dissected in 18 sections and mounted on original linen.