



**Barry Lawrence Ruderman  
Antique Maps Inc.**

7407 La Jolla Boulevard  
La Jolla, CA 92037

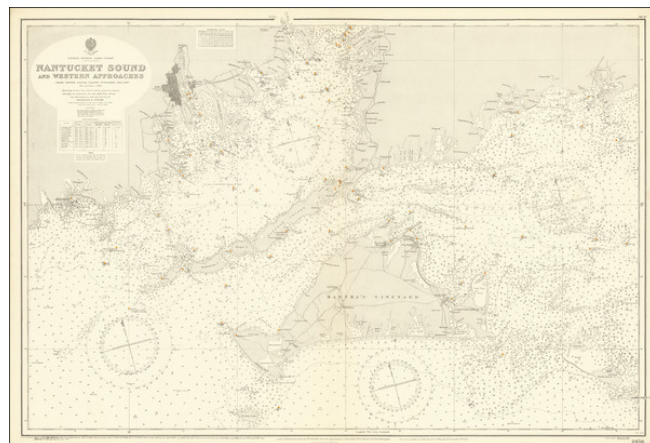
[www.raremaps.com](http://www.raremaps.com)

(858) 551-8500  
[blr@raremaps.com](mailto:blr@raremaps.com)

---

**Nantucket Sound and Western Approaches From United States Charts Published  
1892-1907. with corrections to 1937.**

**Stock#:** 71248  
**Map Maker:** British Admiralty  
**Date:** 1896 (corrections to 1939)  
**Place:** London  
**Color:** Uncolored  
**Condition:** VG+  
**Size:** 38 x 26 inches  
**Price:** SOLD



**Description:**

Detailed British Admiralty chart of Martha's Vineyard and Nantucket Sound, first published in 1896 and corrected to 1939.

The map extends from the western tip of Nantucket Island to the New Bedford area and Hyannis Port on Cape Cod.

**Detailed Condition:**