



**Barry Lawrence Ruderman
Antique Maps Inc.**

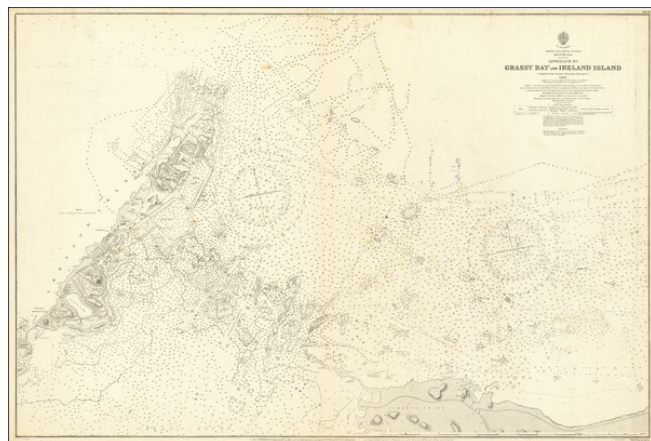
7407 La Jolla Boulevard
La Jolla, CA 92037

www.raremaps.com

(858) 551-8500
blr@raremaps.com

**Bermuda -- Approach to Grassy Bay and Ireland Island compiled from various Admiralty
Surveys to 1887**

Stock#: 71188
Map Maker: British Admiralty
Date: 1888 (corrections to 1920)
Place: London
Color: Uncolored
Condition: VG+
Size: 39 x 26 inches
Price: \$ 595.00



Description:

Detailed sea chart showing the approaches to Grassy Bay, Spanish Point, and Ireland Island in the Great Sound of Bermuda.

The chart covers what is essentially the entrance to the "hook" of Bermuda, the Great Sound. Considerable detail is shown around the dockyard at Ireland Island, including the north and south basins and a floating dock that was in place at the time. Many buildings are delineated and named. This area started out as a Royal Navy Dockyard, but now services many of the yachts that come to Bermuda.

Detailed Condition: