



# Barry Lawrence Ruderman Antique Maps Inc.

7407 La Jolla Boulevard  
La Jolla, CA 92037

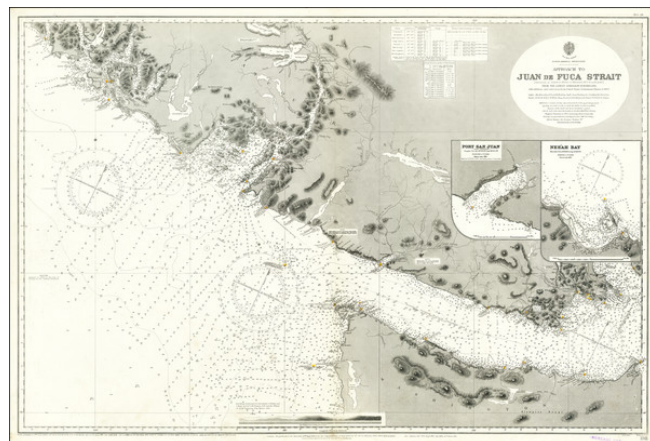
[www.raremaps.com](http://www.raremaps.com)

(858) 551-8500  
[blr@raremaps.com](mailto:blr@raremaps.com)

---

## Approach to Juan de Fuca Strait . . . From The Latest Admiralty Surveys, 1883, with additions and corrections from United States Government Charts to 1899

**Stock#:** 70779  
**Map Maker:** British Admiralty  
**Date:** 1900 (updates to 1925)  
**Place:** London  
**Color:** Uncolored  
**Condition:** VG+  
**Size:** 26 x 39 inches  
**Price:** \$ 975.00



### Description:

Scarce working sea chart of the Strait of Juan de Fuca and contiguous regions, published by the British Admiralty.

The map extends from Flores Island and Sydney Inlet in the northwest to Cape Flattery and New Dungeness in the south, with Victoria, and the western tip of San Juan Island at the far east.

Includes larger inset maps of Port San Juan and Nee'ah Bay, and a profile view.

Includes extensive soundings, sailing directions, topographical features, lighthouses, etc. Small corrections to the map up to 1925.

### Detailed Condition: