



Barry Lawrence Ruderman Antique Maps Inc.

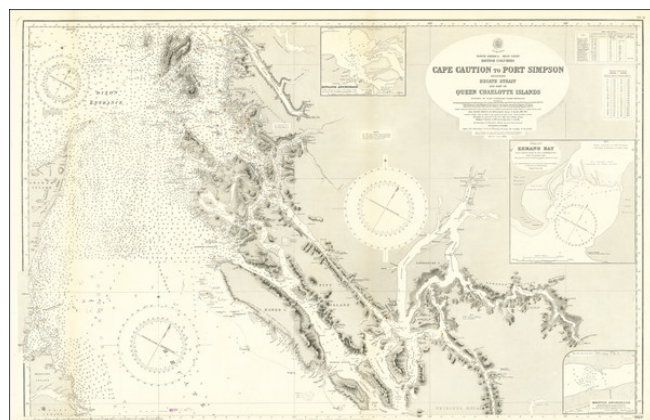
7407 La Jolla Boulevard
La Jolla, CA 92037

www.raremaps.com

(858) 551-8500
blr@raremaps.com

British Columbia Cape Caution to Port Simpson Including Hecate Strait and Part of Queen Charlotte Islands Surveyed by Commander Daniel Pender, R.N.

Stock#: 70775
Map Maker: British Admiralty
Date: 1881 (additions to 1928)
Place: London
Color: Uncolored
Condition: VG
Size: 41 x 26.5 inches
Price: SOLD



Description:

Large engraved chart of the Pacific coast of British Columbia just below the border with Alaska.

The map covers the area known as the Hecate Strait between Graham Island and the archipelago to the east. There are extensive soundings and some terrestrial topography shown. The map extends as far south as Princess Royal Island.

The chart includes insets of Kitlope Anchorage, Khutze Anchorage, and Kemano Bay.

Detailed Condition: