



# Barry Lawrence Ruderman Antique Maps Inc.

7407 La Jolla Boulevard  
La Jolla, CA 92037

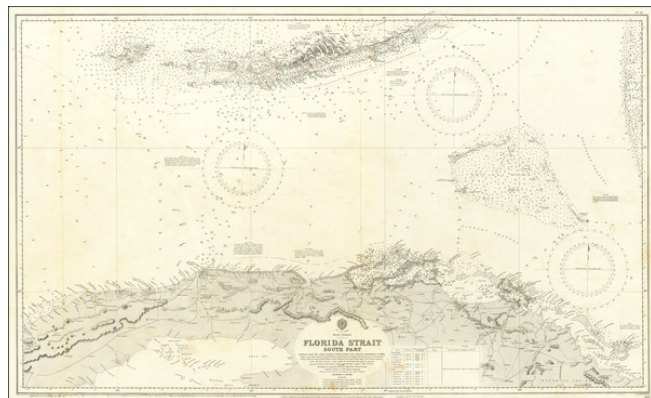
[www.raremaps.com](http://www.raremaps.com)

(858) 551-8500  
[blr@raremaps.com](mailto:blr@raremaps.com)

---

## [Key West to Matacumbe Cay and Alligator Reef] Florida Strait South Part.

**Stock#:** 69949  
**Map Maker:** British Admiralty  
**Date:** 1890 (1927)  
**Place:** London  
**Color:** Uncolored  
**Condition:** VG  
**Size:** 42.5 x 26 inches  
**Price:** SOLD



### Description:

#### *Florida Keys to North Cuba*

Highly detailed British Admiralty Sea Chart of a portion of the Florida Keys and Northern Cuba.

The chart extends to the Tortugas in the west and Alligator Reef and Lower Matacumbe Key. Numerous lighthouse and lights and Beacons are shown.

The corrections in red illustrate how these charts were minutely corrected and updated.

### Detailed Condition: