



# Barry Lawrence Ruderman Antique Maps Inc.

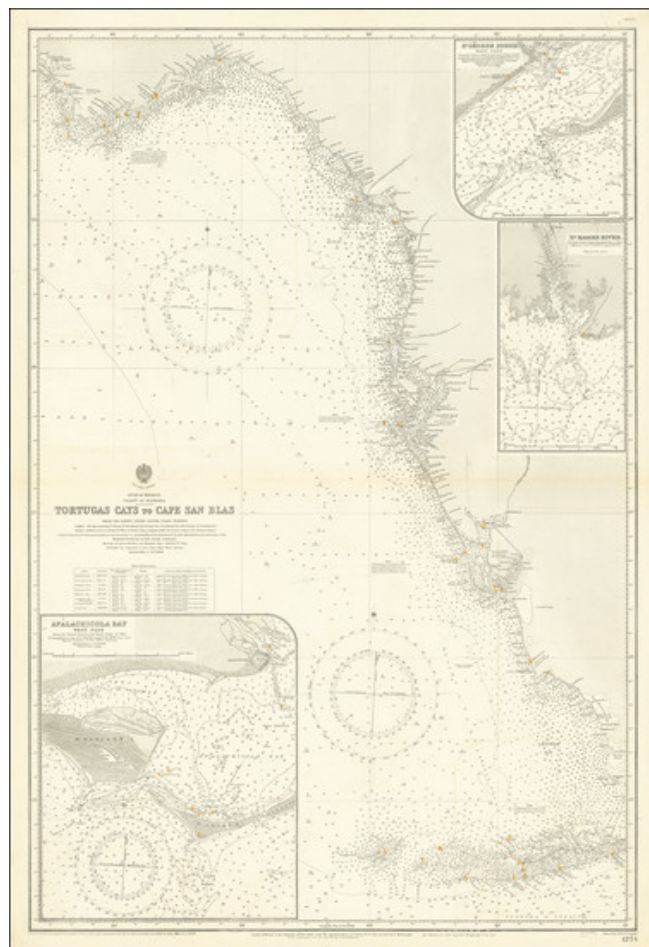
7407 La Jolla Boulevard  
La Jolla, CA 92037

[www.raremaps.com](http://www.raremaps.com)

(858) 551-8500  
[blr@raremaps.com](mailto:blr@raremaps.com)

## Tortugas Cays to Cape San Blas From The Latest United States Coast Surveys . . .

**Stock#:** 68525  
**Map Maker:** British Admiralty  
**Date:** 1890 (1915)  
**Place:** London  
**Color:** Uncolored  
**Condition:** VG  
**Size:** 24.5 x 38 inches  
**Price:** SOLD



### Description:

#### *Antique Sea Chart of the West Coast of Florida Centered on Tampa Bay*

Detailed sea chart of Florida's West Coast, from St. Andrews Bay and Apalachicola Bay to Chatham Bay and the Florida Keys. The coverage of the Keys extends from Cay Vaccas, Boot Cay and Sombrero Cay to Key West and the Tortugas.

Large inset maps include:

- St. George Sound East Pass
- St. Marks River



**Barry Lawrence Ruderman  
Antique Maps Inc.**

7407 La Jolla Boulevard  
La Jolla, CA 92037

[www.raremaps.com](http://www.raremaps.com)

(858) 551-8500  
[blr@raremaps.com](mailto:blr@raremaps.com)

---

**Tortugas Cays to Cape San Blas From The Latest United States Coast Surveys . . .**

- Apalachiola Bay

The chart was updated a number of times by the British Admiralty over the life of the chart.

**Detailed Condition:**