



Barry Lawrence Ruderman Antique Maps Inc.

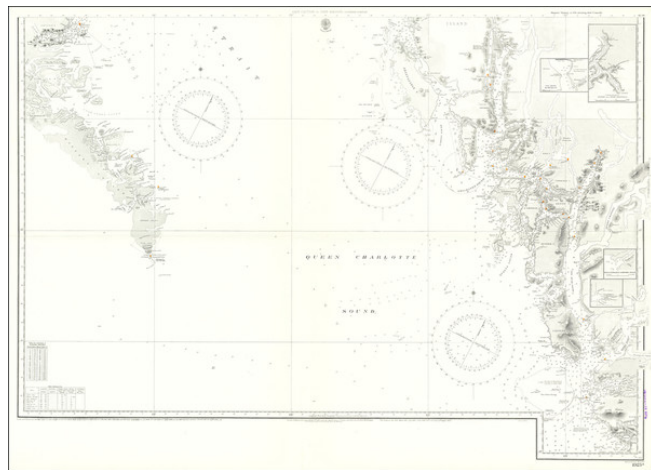
7407 La Jolla Boulevard
La Jolla, CA 92037

www.raremaps.com

(858) 551-8500
blr@raremaps.com

Cape Caution to Port Simpson, Southern Portion

Stock#: 68497
Map Maker: British Admiralty
Date: 1867 (additions to 1920)
Place: London
Color: Uncolored
Condition: VG+
Size: 41 x 29.5 inches
Price: \$ 245.00



Description:

Detailed Coastal Chart of a section of British Columbia, published by the British Admiralty.

The chart includes the southern part of Queen Charlotte Island in the west and extends from Bramham Island and Allison Harbor area in the south to the area around Sarah Island and Aristazabal Island.

Includes insets of West Entrance to Schooner Passage, the area around Owikeno Kimsquit, and a continuation of Burke and Dean Channels.

Detailed Condition: