



# Barry Lawrence Ruderman Antique Maps Inc.

7407 La Jolla Boulevard  
La Jolla, CA 92037

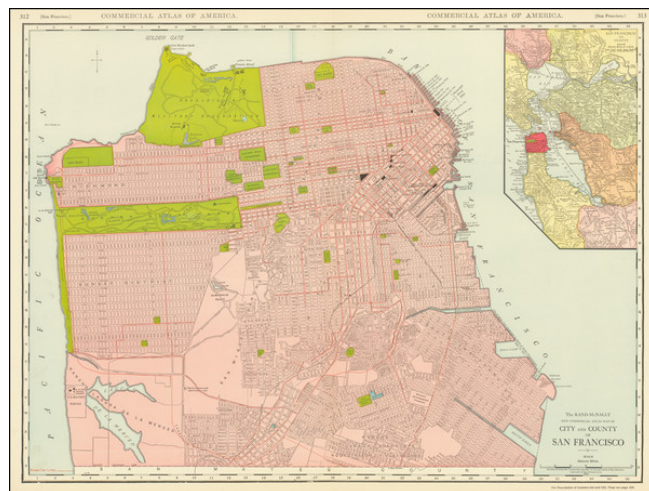
[www.raremaps.com](http://www.raremaps.com)

(858) 551-8500  
[blr@raremaps.com](mailto:blr@raremaps.com)

---

## Rand-McNally New Commercial Atlas Map of City and County of San Francisco

**Stock#:** 68441  
**Map Maker:** Rand & McNally  
**Date:** 1912  
**Place:** Chicago  
**Color:** Color  
**Condition:** VG  
**Size:** 26 x 19 inches  
**Price:** SOLD



### Description:

This is a great large-format, highly detailed map of San Francisco, showing towns, wharfs, rail lines, street car lines, roads, buildings, and more. The map includes a large inset of San Francisco Bay, attractively colored according to the county. Oakland, Sausalito, Berkely, San Rafael, Palo Alto, and many more towns and cities are marked. This is the best large format map of San Francisco to appear in an early 20th-century commercial atlas.

The detail on the map is extensive and attractive. Parks are given a bright green color, while the rest of the city is shown in an attractive pink. Many streets and features are named. The city is shown having just rebuilt itself following the disastrous earthquake of 1905.

### Detailed Condition: