



**Barry Lawrence Ruderman  
Antique Maps Inc.**

7407 La Jolla Boulevard  
La Jolla, CA 92037

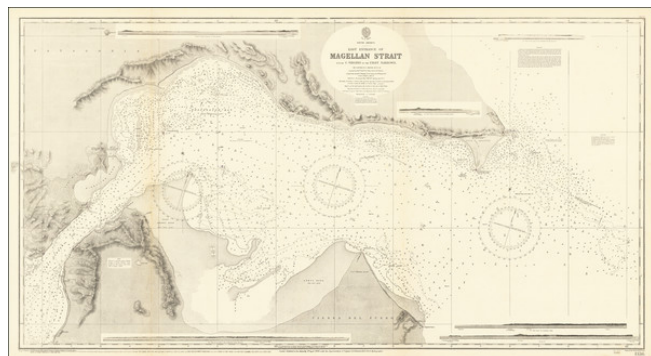
[www.raremaps.com](http://www.raremaps.com)

(858) 551-8500  
[blr@raremaps.com](mailto:blr@raremaps.com)

---

**East Entrance of Magellan Strait from C. Virgins to the First Narrows. By Captain R.C.  
Mayne, R.N: C.B.**

**Stock#:** 67800  
**Map Maker:** British Admiralty  
**Date:** 1869 (updated to 1937)  
**Place:** London  
**Color:** Uncolored  
**Condition:** VG+  
**Size:** 48 x 26 inches  
**Price:** SOLD



**Description:**

Detailed British Admiralty chart of the easternmost entrance to the Strait of Magellan.

"The Light house was not visible to us before we saw it in a bearing of N 25° W true."

An exceptionally detailed chart.

**Rarity**

This is the first time we have ever seen the chart offered for sale.

**Detailed Condition:**