



# Barry Lawrence Ruderman Antique Maps Inc.

7407 La Jolla Boulevard  
La Jolla, CA 92037

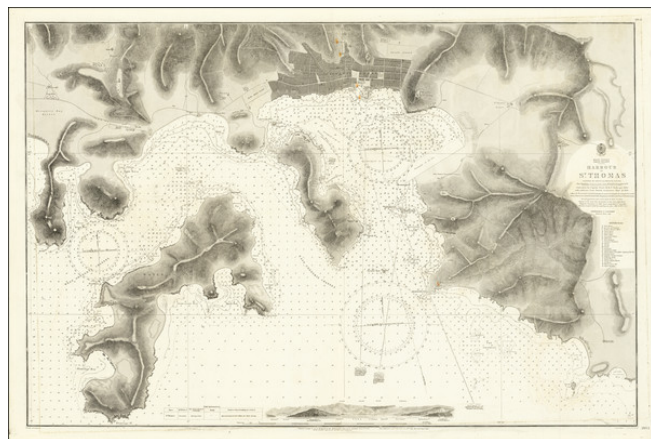
[www.raremaps.com](http://www.raremaps.com)

(858) 551-8500  
[blr@raremaps.com](mailto:blr@raremaps.com)

---

## (Charlotte Amalie, U.S. Virgin Islands) Harbour of St. Thomas. Surveyed by Lieut G. B. Lawrence, R.N. 1851

**Stock#:** 67729  
**Map Maker:** British Admiralty  
**Date:** 1853 (1917)  
**Place:** London  
**Color:** Uncolored  
**Condition:** VG+  
**Size:** 37 x 25 inches  
**Price:** SOLD



### Description:

Detailed chart of the harbor at St. Thomas and environs, including a profile view of the approach to the harbor and remarkable details for both land and sea.

The chart includes a plan of Charlotte Amalie, and a detailed depiction of the topography, roads, and outlining settlements and structures. The lighthouses and a number of mountains and other geographical features are noted.

The chart includes extensive soundings, sailing instructions, coastal features and place names, along with shipping channels and other nautical details. Water Island is also shown in detail.

### Detailed Condition: