



# Barry Lawrence Ruderman Antique Maps Inc.

7407 La Jolla Boulevard  
La Jolla, CA 92037

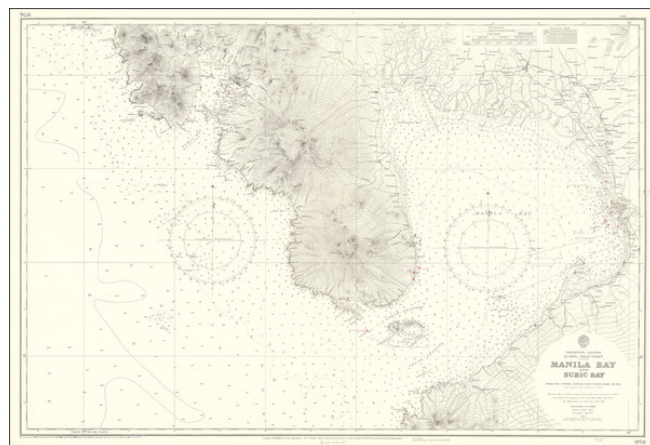
[www.raremaps.com](http://www.raremaps.com)

(858) 551-8500  
[blr@raremaps.com](mailto:blr@raremaps.com)

---

## Manila Bay and Subic Bay . . .

**Stock#:** 67328  
**Map Maker:** British Admiralty  
**Date:** 1960 (1965)  
**Place:** London  
**Color:** Uncolored  
**Condition:** VG+  
**Size:** 39 x 26 inches  
**Price:** \$ 275.00



### Description:

Highly detailed chart of the Bay of Manila, published by the British Hydrographical Survey.

The map is a remarkably detailed work, based upon the US Coast Survey Hydrographical surveys of 1920.

### Detailed Condition: