



Barry Lawrence Ruderman Antique Maps Inc.

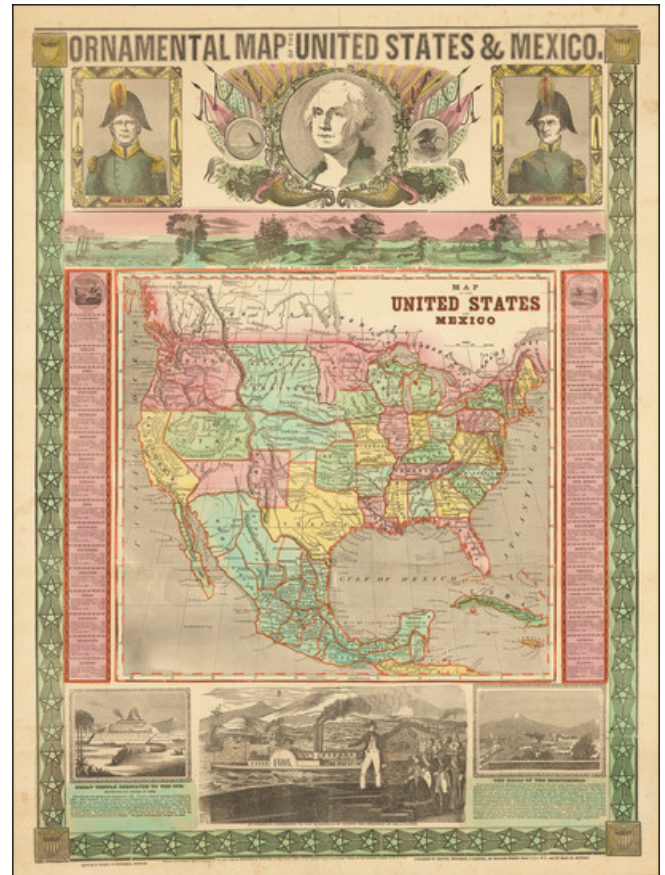
7407 La Jolla Boulevard
La Jolla, CA 92037

www.raremaps.com

(858) 551-8500
blr@raremaps.com

Ornamental Map of the United States & Mexico . . . 1848

Stock#: 67306
Map Maker: Phelps
Date: 1849 circa
Place: New York
Color: Hand Colored
Condition: VG
Size: 21 x 28.5 inches
Price: SOLD



Description:

Rare Early Depiction of the "Minnesota" Territory

A decorative map of the United States, published during the Mexican-American War designed to stir patriotic sentiments and celebrate the newly conquered territory. Of particular note, the map is one of the earliest printed maps to show Minnesota Territory (called "Minesota" on the map), which became a territory on March 3, 1849.

The map includes a large Oregon Territory, though with its present-day boundaries. The map includes a massive Nebraska Territory, Minnesota Territory, Utah Territory, New Mexico Territory and Indian Territory. The map highlights the "Route of the Oregon Emigrants."

The map is ornamented with many interesting drawings and portraits, as advertised in the title. Portraits



**Barry Lawrence Ruderman
Antique Maps Inc.**

7407 La Jolla Boulevard
La Jolla, CA 92037

www.raremaps.com

(858) 551-8500
blr@raremaps.com

Ornamental Map of the United States & Mexico . . . 1848

of George Washington, General Zachary Taylor, and General Winfield Scott line the top. The latter two were heroes of the Mexican-American War. Below is a panorama of the "Contemplated Oregon Railroad" purporting to show a view from New York to the Pacific. Along each side of the map is a short vignette on each of the states of the Union.

Interestingly, while previous editions focus more on the history of the two countries with extensive explanatory text at the bottom, this edition replaces that with three large images, with the central and largest image showing American industrial power. The other two images are historical reconstructions of Aztec cities and monuments.

Detailed Condition:

Original hand-color. Some toning spots along top. Repaired tears from the bottom and top edges into the image.