



Barry Lawrence Ruderman Antique Maps Inc.

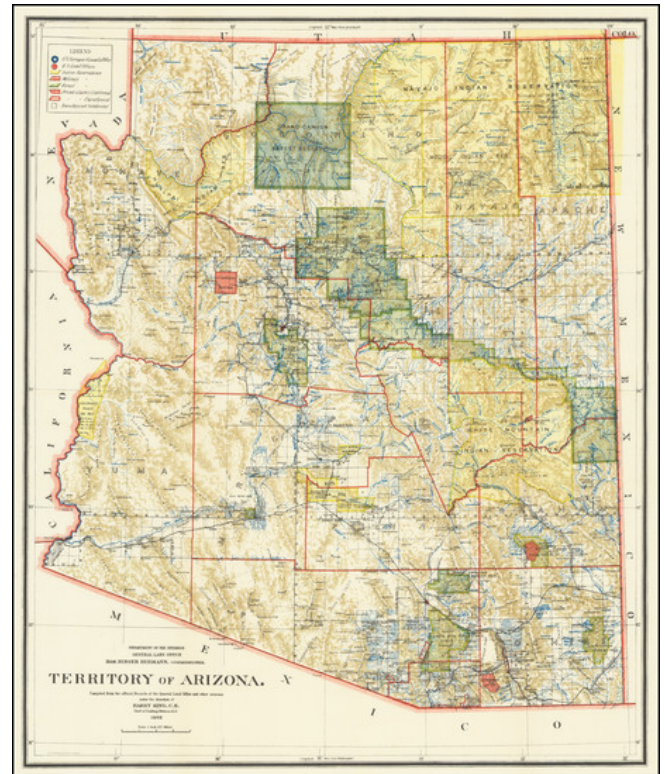
7407 La Jolla Boulevard
La Jolla, CA 92037

www.raremaps.com

(858) 551-8500
blr@raremaps.com

Territory of Arizona . . . 1902

Stock#: 65964
Map Maker: General Land Office
Date: 1902
Place: Washington
Color: Color
Condition: VG+
Size: 17 x 20 inches
Price: SOLD



Description:

One of the best and most highly detailed maps of Arizona Territory of the period, published by the General Land Office.

The map was produced by the Dept. of the Interior, under the Supervision of Harry King. This edition is revised and reconstructed by R.H. Morton. The legend notes, the various US Surveyor General's offices in the Territory, US Land Offices, Indian Reservations, Military Reservations, Private Claims Confirmed, Private Claims Unconfirmed, and Townships not yet subdivided. The map notes towns, roads, railroads, railway and stagecoach stations, mines, wells, mountains, rivers, and a host of other details.

An essential map for Arizona collectors.

Detailed Condition: