



# Barry Lawrence Ruderman Antique Maps Inc.

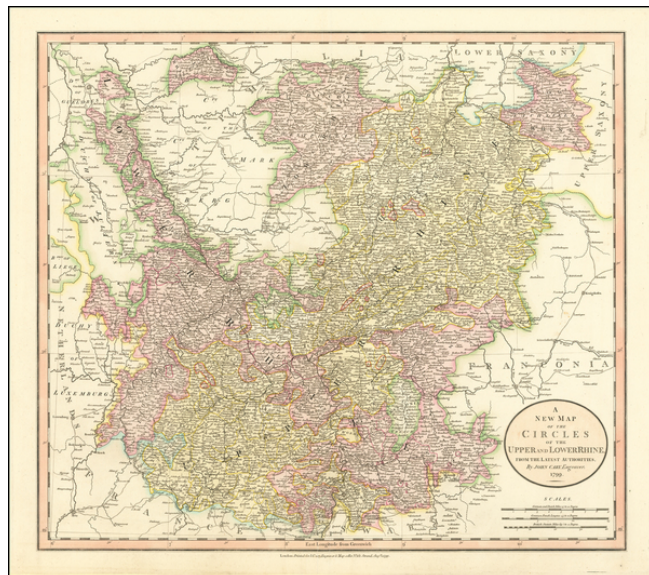
7407 La Jolla Boulevard  
La Jolla, CA 92037

[www.raremaps.com](http://www.raremaps.com)

(858) 551-8500  
[blr@raremaps.com](mailto:blr@raremaps.com)

## A New Map of the Circles of the Upper and Lower Rhine... 1799.

**Stock#:** 62267  
**Map Maker:** Cary  
**Date:** 1799  
**Place:** London  
**Color:** Hand Colored  
**Condition:** VG  
**Size:** 20.5 x 18 inches  
**Price:** SOLD



### Description:

Detailed map of the German Empire at the end of the 18th Century.

The map extends from the Baltic and the Gulf of Dantzic in the northeast to the Low Countries in the northwest and from the Republic of Venice in the Southwest to Belgrade in the Southeast.

### Detailed Condition:

Backed with Archival Paper